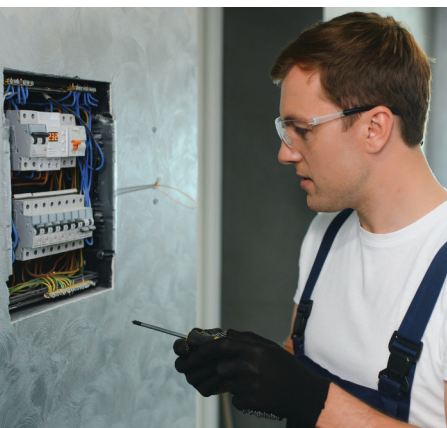


APPLICATION STUDY: THE CMU100USD ENHANCES PANEL BUILDER PROJECTS WITH ADVANCED CURRENT MONITORING



BACKGROUND:

In the demanding field of panel building, ensuring the safety and efficiency of electrical systems is paramount. Panel builders are tasked with creating reliable and efficient electrical panels that manage complex systems and ensure operational safety. The CMU100USD Multifunction AC Current Monitoring Relay offers a comprehensive solution for monitoring and protecting industrial equipment from over-current and under-current conditions. With its advanced features and robust design, this relay is tailored to meet the precise needs of panel builders, enhancing the reliability and performance of their projects. Accurate current monitoring is essential to prevent equipment damage, reduce downtime, and maintain system integrity. Traditional current monitoring solutions often lack the flexibility and precision required, prompting the need for a more versatile and user-friendly alternative.

THE CHALLENGE:

Panel builders face unique challenges, including the need to monitor and protect against current fluctuations, integrate various subsystems, and optimize space within control panels. The CMU100USD addresses these challenges by offering multiple monitoring functions, a wide voltage range, and a compact design that simplifies installation and enhances system reliability.

THE SOLUTION:

The **CMU100USD Multifunction AC Current Monitoring Relay** is a robust solution designed specifically for panel builders. Key features include:

- **Comprehensive Current Monitoring:** Monitors over-current, under-current, and window conditions, providing complete protection for electrical systems.
- **Adjustable Time Delays:** Allows smooth adjustment of current limits and time delays to eliminate short-term spikes and ensure precise control.
- **Compact Design:** Optimizes space in control panels, facilitating easier installation and maintenance.
- **Universal Supply Voltage:** Supports AC/DC 24-240V (50-60Hz), ensuring compatibility with various power sources and configurations.

THE FUTURE:

The CMU100USD Multifunction AC Current Monitoring Relay will continue to play a critical role in panel building, providing reliable and versatile current monitoring solutions. Its adaptability, precision, and robust performance make it an essential component for enhancing the safety and efficiency of electrical systems in various industrial applications.



Division of the Marsh Bellofram
Group of Companies
8019 Ohio River Blvd.
Newell, WV 26050 USA
Phone: 800-727-5646
Fax: 304-387-1212
www.atcdiversified.com