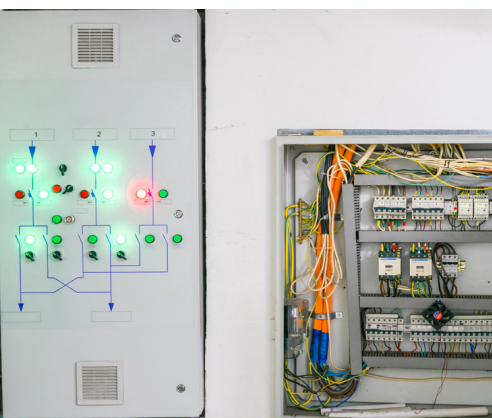


APPLICATION STUDY: THE DTT100USD ENHANCES SAFETY AND RELIABILITY IN EMERGENCY LIGHTING AND DOOR UNLOCK SYSTEMS



Division of the Marsh Bellofram
Group of Companies
8019 Ohio River Blvd.
Newell, WV 26050 USA
Phone: 800-727-5646
Fax: 304-387-1212
www.atcdiversified.com

BACKGROUND:

The DTT100USD True Off-Delay Time Relay ensures safety and compliance during power outages by maintaining critical emergency lighting and door unlocking functions. Designed for facilities such as transit stations, high-security areas, and industrial sites, it provides a controlled delay before relay contact alternation for switching to a backup source of power, allowing for safe evacuation. With adjustable settings ranging from 0.1 seconds to 10 minutes, broad power compatibility, and easy configuration, the DTT100USD delivers precise and reliable performance, making it essential for enhancing safety and operational continuity in emergency scenarios.

THE CHALLENGE:

Emergency lighting and door unlocking systems must remain functional during power outages to ensure the safety and secure evacuation of personnel. The DTT100USD addresses this critical need by providing accurate timing control that activates after a set duration following a sustained power loss, ensuring that emergency lighting stays illuminated, doors remain unlocked, and other safety devices designed to be activated by backup emergency power remain operational. This ensures individuals can safely exit the building, guided by the proper safety devices. Additionally, the DTT100USD offers flexibility with its customizable delay settings, accommodating different safety requirements for various facilities. Its robust design, precision, and reliability make it indispensable for protecting lives and maintaining safety in emergency infrastructures such as transit systems and high-security facilities, where operational continuity is essential.

THE SOLUTION:

The **DTT100USD True Off-Delay Time Relay** offers a robust solution tailored for these critical safety applications, featuring:

- **Customizable Delay Settings:** Allows precise control with adjustable settings from 0.1 seconds to 10 minutes, ensuring the specific timing needs of emergency systems are met.
- **Broad Supply Voltage Range:** Supports AC/DC 12-240V, providing versatility across different power sources and configurations.
- **Simple Configuration:** Facilitates quick setup and fine-tuning with rotary switches and a potentiometer, minimizing installation time.

Space-Efficient Design: Conserves valuable control panel space, allowing for easy integration and maintenance.

Visual Status Indicators: Offers real-time feedback on relay status with LED indicators, enhancing system monitoring and troubleshooting.

THE FUTURE:

The DTT100USD True Off-Delay Time Relay will continue to play a crucial role in enhancing safety and compliance in emergency lighting and door unlocking systems. Its flexibility, reliability, and precision will ensure that it remains a trusted component in safety-critical environments, providing peace of mind and operational continuity when it matters most.