

F200 Pilot Restrictor Change:

BelGAS offers the P200 with a pilot regulator to improve the accuracy and performance of the P200. This unit is denoted as the F200.

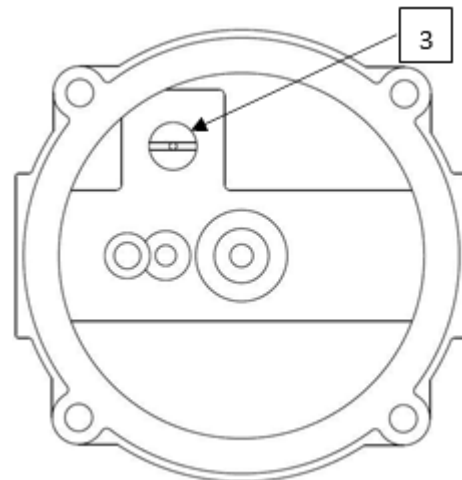
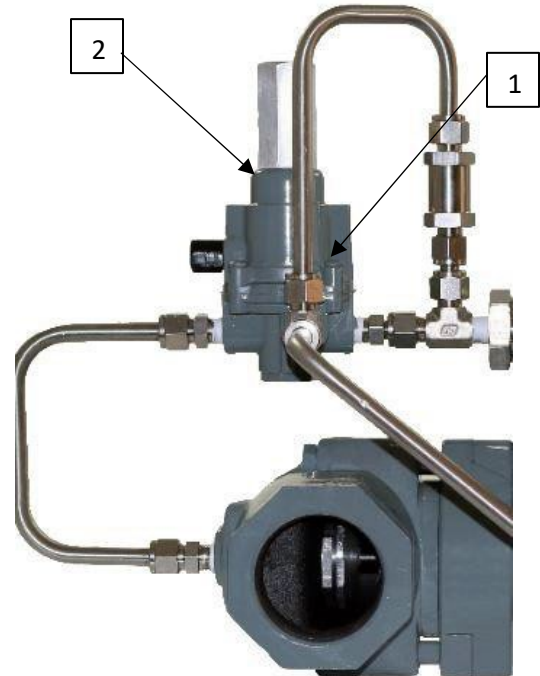
This pilot is the BelGAS PL84 and comes with three gain options; low, standard, and high. Low provides the slowest response time while high provides the quickest response. This is accomplished by using a restrictor screw in the body of the PL84.

- Standard (Red Head) – 648-543-000
- Low (Blue Head) – 648-543-001
- High (Yellow Head) – 648-543-002

Before beginning work on the PL84, take note of orientations of the body and bonnet for proper realignment.

The replacement is done by removing the 4 Philips head screws (1) in the bonnet (2) [CAUTION: Back off adjustment screw to prevent bonnet from suddenly dislodging], and then removing the spring and diaphragm assembly.

Remove the current restrictor screw (3) with a flat head screw driver and replace with new screw. Reinstall diaphragm assembly and spring. Reinstall Bonnet and screws in a cross pattern to 20 in/lbs.

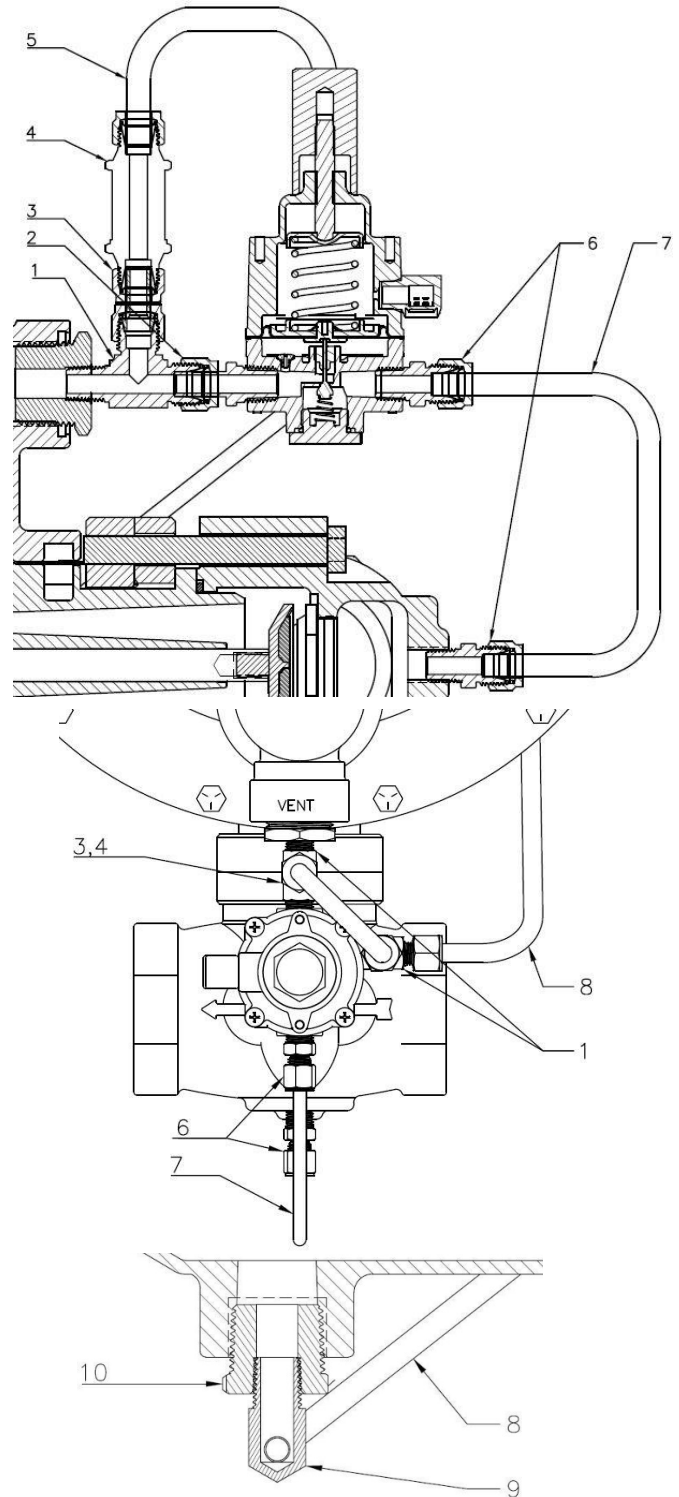


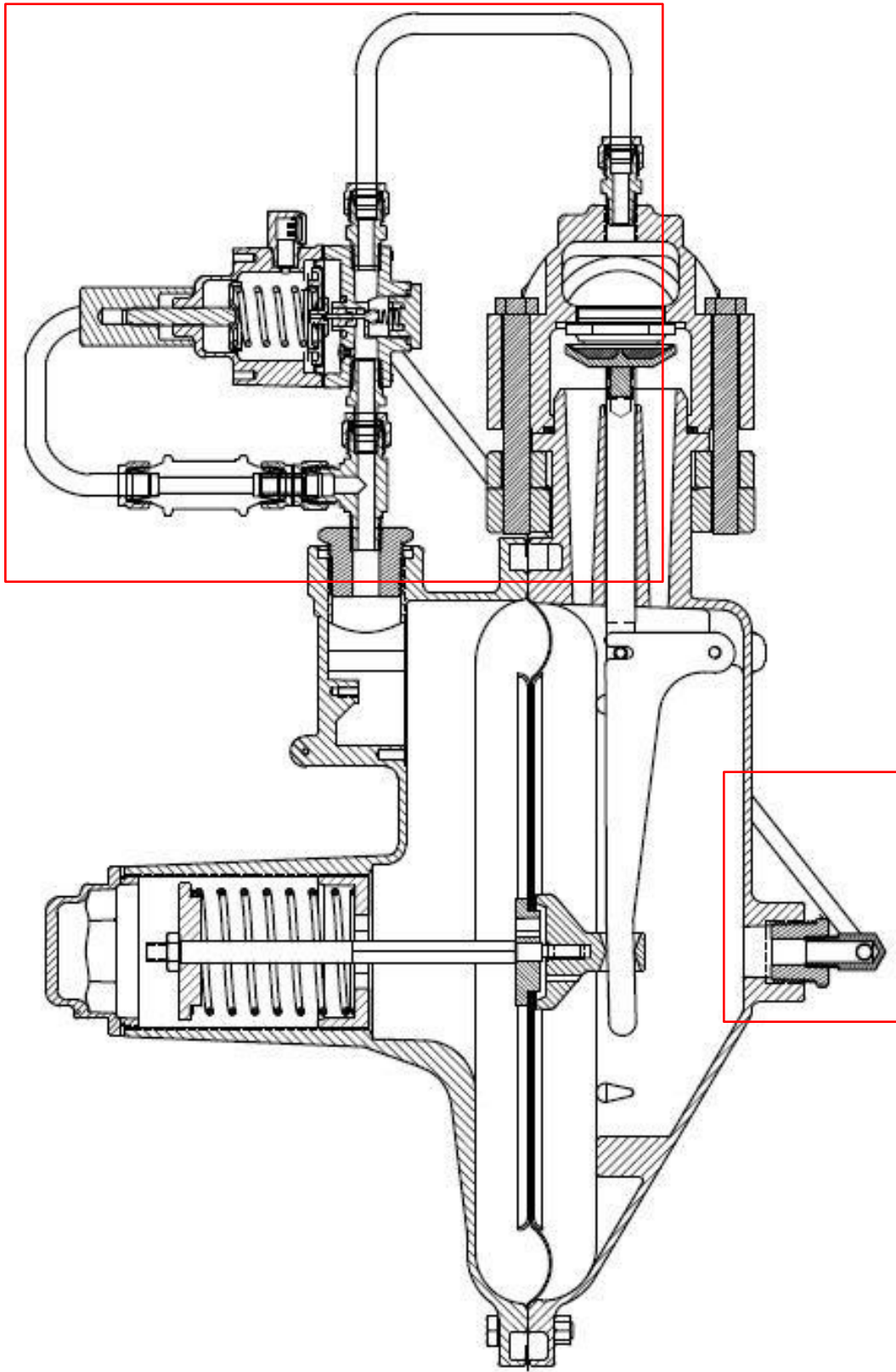
How to order a F200/F300 without tubing:

BelGAS is now offering our pilot operated regulators without tubing to allow end users to plumb the system to their needs/requirements. In order to do so, the extension **-7899** (Ex. F200D1401000630**7899**) must be added to the end of the completed P/N.

However, we do offer the fittings/tubing provided with a complete F200/F300 for purchase. The following table lists the corresponding P/N's for the fittings/tubing that are not included with extension **-7899**.

Item Key	P/N	Description	Qty
1	622-074-001	Right Angle Fitting	2
2	673-040-000	SS Port Connector	1
3	673-041-000	SS Pilot Connector	1
4	678-075-000	SS Relief Valve	1
5	660-124-000	Relief Tubing	1
6	622-065-000	SS Straight Fitting	2
7	660-123-000	F200 Pilot Supply Tubing	1
	660-151-000	F300 Pilot Supply Tubing	1
8	660-125-000	F200D Sense Line	1
	660-126-000	F200P Sense Line and Inline Tee	1
	660-127-000		
	622-098-000	F300D Sense Line	1
	660-149-000	F300P Sense Line and Inline Tee	1
660-150-000			
622-098-000			
9	622-066-000	1/4 x 3/8 SS Elbow	1
10	622-076-001	3/4 x 1/4 SS Fitting	1





Rework Procedure to convert F200P to F200D

This document covers the procedure to rework a BelGAS F200P external sense unit into a F200D internal sense unit. At the current time, it is not possible to convert a factory made F200D to an F200P.

Procedure

1. Remove pilot loading tubing (item 1) from body and pilot.
2. Loosen body bolts (item 2) to remove body from housing.
3. Unscrew main seat (item 3) from valve stem. Take care not to damage the sealing surface of the main seat during removal.
4. Pull the throat block assembly (item 4) out of the housing neck.
5. Reattach the main seat by applying a small amount of Loctite #242 to the threads and thread into valve stem by hand until it seats against the valve stem.
6. Replace the body and torque the bolts to 25 ft-lb. Be sure to evenly tighten the bolts to avoid damage to the union ring. Reattach the tubing to the body and pilot fittings.
7. Install Swagelok Cap # SS-600-P or equivalent into tee (item 5) on sensing line.
8. Check unit for external leakage before putting into service.

