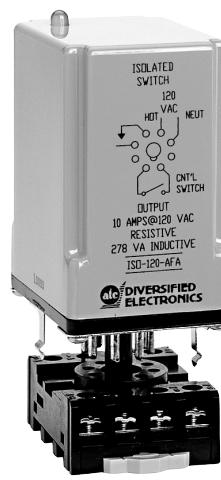


OPERATION

The **ISO Series single channel** devices are used to provide a safe and reliable means of controlling loads from hazardous locations without releasing sufficient energy, under normal or abnormal conditions, to cause ignition of a flammable or combustible atmospheric mixture while in its most easily ignited concentration. An isolated output turns on when the control switch input from the hazardous location is closed. When the control switch input opens, the isolated output turns off. The **Style A single channel plug-in devices** come equipped with integral spring mating clips and socket (PF083A) which secure the device to make this unit the only **UL913 Intrinsically Safe plug-in associated apparatus available on the market today**. The **Style N, surface mounted enclosure** is sealed with a high quality epoxy resin material and has five (5) #8-32 screw terminals.

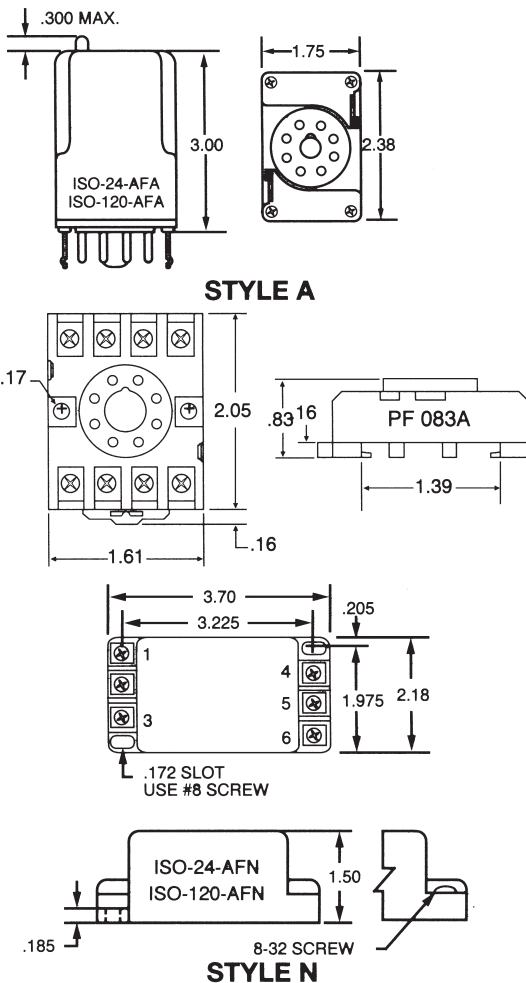


Process Control Equipment
for Hazardous Locations
7M26
UL913



Single Channel Isolated Switch

DIMENSIONS (INCHES)



SPECIFICATIONS

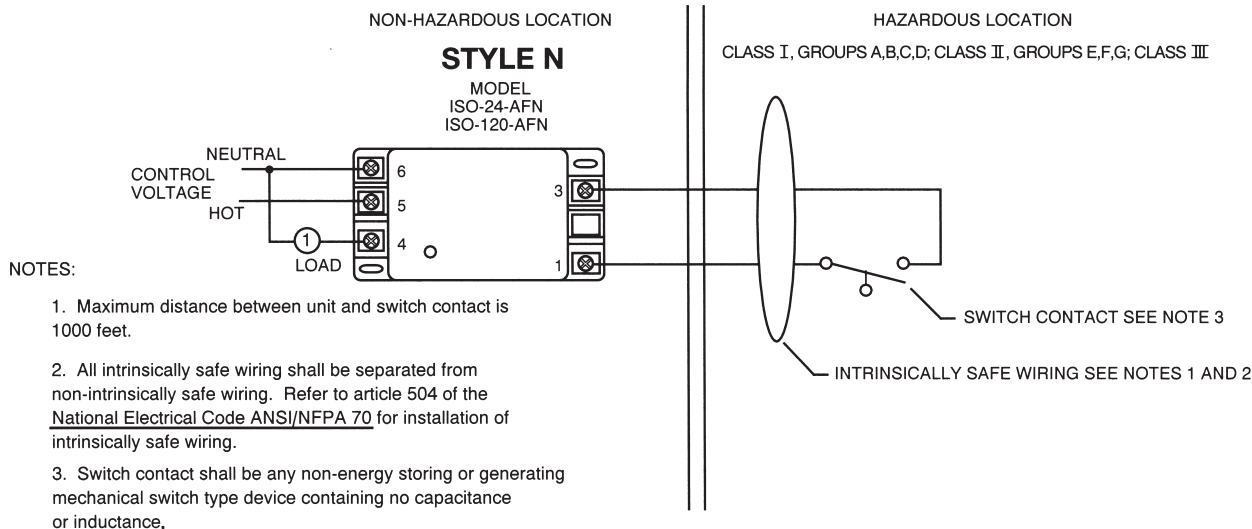
CONTROL VOLTAGE	24 or 120 VAC ±10%, 50/60 Hz	
CONTROL SWITCH	Open Circuit Voltage	16 VDC
	Short Circuit Current	200 µAmps
RESPONSE	Operate	6 mSEC (Approx.)
	Release	2.5 mSEC (Approx.)
POWER REQUIRED	1.5 VA	
DUTY CYCLE	Continuous	
CONTACT RATING	SPST-N.O., 5 amps @ 24 or 120 VAC, Resistive; 278 VA, Inductive	
SENSITIVITY	100 k ohm	
ISOLATION	2500 Volts, Input to Output	
	LIFE EXPECTANCY	Mechanical
	Electrical	50,000 Operations @ Rated Load
INDICATORS	On When Output is On	
TEMPERATURE RATING	Operate	-4° to 131°F (-20° to +55°C)
	Storage	-40° to 185°F (-40° to +85°C)
ENCLOSURE	Style "A" and "N"	
TERMINATIONS	(12) #8-32 Screw terminals	
WEIGHT	20 oz.	

ORDERING INFORMATION

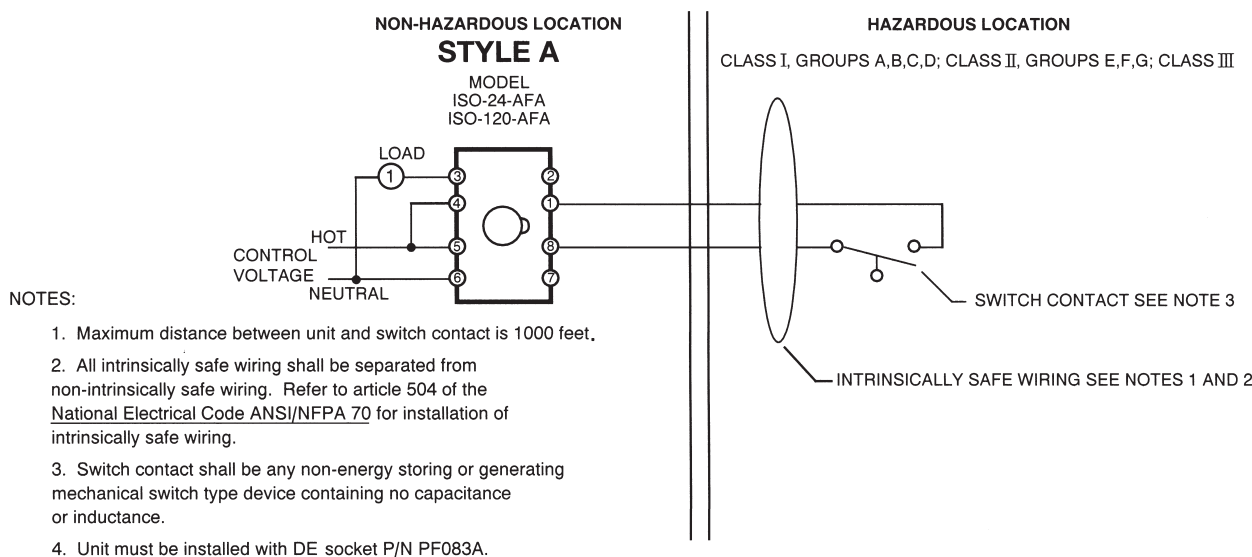
MODEL NUMBER	CONTROL VOLTAGE	ENCLOSURE STYLE
ISO-24-AFA	24 VAC	A
ISO-120-AFA	120 VAC	A
ISO-24-AFN	24 VAC	N
ISO-120-AFN	120 VAC	N

Style "A" Socket Included (PF083A) with clips

CONTROL DRAWING 191



CONTROL DRAWING 192



CONTROL DRAWING 193

