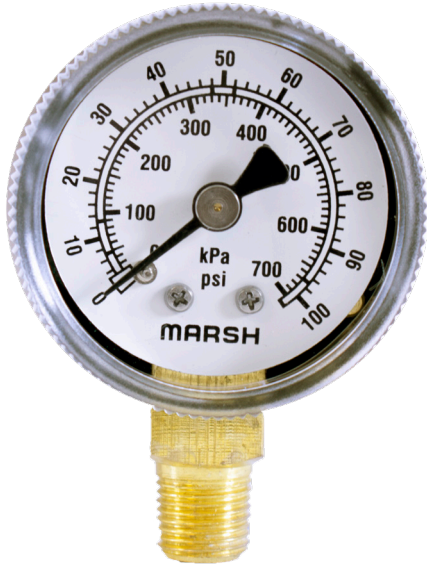


# J Series

Steel Case / Brass Internals / Lower Mount

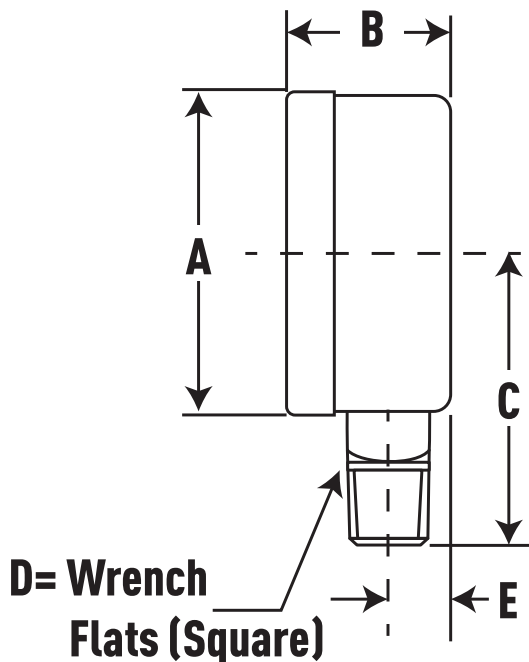


The General Service Steel Case Gauge from Marsh Instruments is a family of cost-effective, general purpose instruments designed for reliable pressure measurements. Suitable for use with water, oil, air, gas or other noncorrosive media from vacuum/compound through 5,000 psi.

## Features:

- Superb quality, economical price
- Pressure ranges to 5,000 psi

## Product Dimensions



## Product Specifications

<b>Design</b>	Meets/Exceeds ASME B40.100
<b>Accuracy</b>	±3/2/3% (ASME Grade B)
<b>Dial Size(s)</b>	1 1/2", 2", 2 1/2", 3 1/2", 4 1/2" Diameter
<b>Case</b>	Steel, Black Painted
<b>Bezel</b>	Twist Lock Lens
<b>Tube &amp; Socket</b>	Copper Alloy
<b>Movement</b>	Brass
<b>Connection</b>	1/8 & 1/4 NPT - Lower Mount
<b>Pressure Ranges</b>	VAC/Compound to 5,000 psi
<b>Standard Scale</b>	Dual Scale psi and kPa
<b>Dial Color</b>	Black Markings on White
<b>Pointer</b>	Aluminum, Black Painted
<b>Window</b>	1.5"-3.5" Twist-On Acrylic 4.5" Flat Plastic
<b>Standard Case Fill</b>	Dry, Non-Fillable
<b>Ambient Temperature</b>	-40° to 160°F
<b>Vent Plug</b>	N/A
<b>Weight</b>	1 0.2 lb. 2" 0.3 lb. 2 1/2" 0.4 lb. 3 1/2" 0.5 lb. 4 1/2" 0.75 lb.

Dial Size	Product Numbers	A	B	C	D	E
1.5	J04XX	1.67	0.90	1.50	7/16	0.26
2	J11XX	2.20	1.22	1.82	9/16	0.40
	J14XX	2.20	1.22	1.82	9/16	0.40
2.5	J40XX	2.73	1.22	2.10	9/16	0.40
	J46XX	2.73	1.22	2.10	9/16	0.40
3.5	J80XX	3.71	1.22	2.77	9/16	0.40
4.5	J90XX	4.53	1.22	3.16	9/16	0.40

Interested in ordering? Ordering information available at [MarshGauges.com](http://MarshGauges.com)