

SPECIFICATIONS

CONTROL VOLTAGE	12 to 240 VAC
	12 to 110 VDC, See Table 1
PICK UP VOLTAGE	AC Coils 80% of Nominal
	DC Coils 80% of Nominal
DROP OUT VOLTAGE	AC Coils 30% of Nominal
	DC Coils 10% of Nominal
MAXIMUM VOLTAGE	110% of Nominal
RESPONSE TIMES	Pick-up 30 mSEC, maximum
	Drop-out 20 mSEC, maximum
TEMPERATURE RATING	Operate -10°C to +40°C
	Storage -45°C to +85°C
POWER (NOMINAL VOLTAGE)	AC Coils 2.1 VA
	DC Coils 1.2 Watts
DUTY CYCLE	Continuous
DIELECTRIC STRENGTH	1500 VAC, 50/60 Hz. for 1 minute
INSULATION RESISTANCE	100 Meg ohms, minimum
CONTACT MATERIAL	Silver cadmium oxide
CONTACT ARRANGEMENTS	DPDT 8-pin plug-in
	3PDT 11-pin plug-in
OUTPUT RATINGS	See Table 2
AGENCY APPROVALS	Consult Factory
WEIGHT	3 oz.



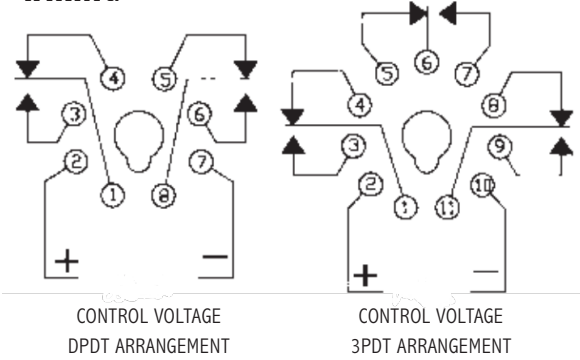
Medium Power Plug-In Relays

- Low Cost
- 8 pin or 11 pin Track Mountable Plug-in Base
- Rugged Design
- DPDT & 3PDT Arrangements
- 10 Amp Output
- 12, 24, 120, & 240 volts operation
- High Reliability

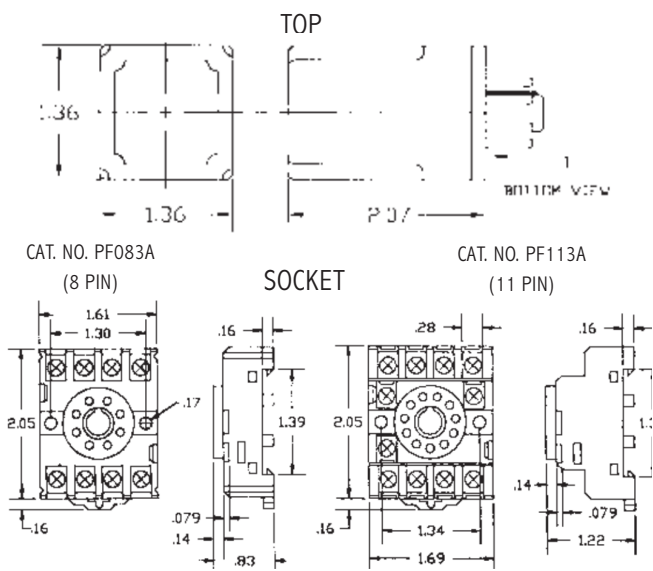
Nominal Voltage	Rated current (mA)		Coil resistance (ohms)
	50 Hz	60 Hz	
AC	12	199	--
	24	99	
	120	20.5	
	240	10.2	
DC	12	100	120
	24	51	472
	110	11.5	10,000

Specifications	Resistive load (p.f. = 1)	Inductive load (p.f. = 0.4; L/R = 7msec)
Rated load	230 VAC 10A 28 VDC 10A	230 VAC 6A 28 VDC 7.5A
Carry current	10A	
Max. operating voltage	250 VAC 250 VDC	
Max. operating current	10A	
Max. switching capacity	2300VA	1400VA
	280W	210W
Minimum permissible load	5 VDC 100mA	

WIRING



DIMENSIONS (INCHES)



MODEL NUMBER	KAA				X
COIL VOLTAGE	12 Volts	12			
	24 Volts	24			
	110 Volts	110			
	120 Volts	120			
	240 Volts (AC Only)	240			
TYPE OF VOLTAGE	AC		A		
	DC		D		
CONTACT ARRANGEMENT	DPDT			D	
	3PDT			T	