

# MD72SS

## 316L Stainless Steel Pressure Regulator

MARSH MEDICAL



The **MD72SS Stainless Steel Pressure Regulator** is a direct-acting diaphragm pressure-reducing regulator. This ruggedly built regulator operates in pressure ranges up to 150 psig (1 BAR) with maximum inlet pressure up to 435 psig (30 BAR). The MD72SS pressure regulator can be through-panel mounted with the mounting nut supplied or pipe mounted by its ports. The MD72SS applications include clean steam for sanitizing, air pressure and industrial or medical gas pressure regulation. Ideal for when a corrosion-resistant regulator is preferred or required. All material internal as well as the body and bonnet is made from bar stock 316L stainless steel. Oxygen cleaning is available on the MD72SS unit for use in clean environments, gases and medical application.

### FEATURES

- All 316L stainless steel material
- Two port sizes of 1/8" & 1/4" NPTF
- High flow rate
- Five pressure ranges between 3 & 150 psig
- Low temp nitrile elastomers

### FOCUS MARKETS/APPLICATIONS

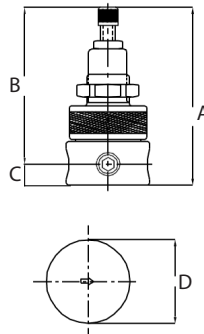
- Medical and Bio-Medical
- Instrument & Sampling Panels
- Corrosive and Caustic Mediums
- Pharmaceutical Processing Equipment
- Lab Water Purification Systems

### COMPETITIVE ADVANTAGES

- NACE compliant
- -76°F to 176°F temp range
- 316L bar stock precision parts
- High flow rate in all port sizes
- O2 cleaning available

### DIMENSIONS

Size		A	B	C	D
1/8", 1/4"	in.	3.2	2.8	0.4	1.5
	mm.	80.5	71.0	9.5	38.1



### TECHNICAL DATA

Fluid	Compressed air and industrial gases
Pipe size	1/8", 1/4"
Port thread	NPT - Standard
Max. inlet pressure	435 psi (30 bar)
Operating temp. range	-60°C to +80°C (-76°F to +176°F)
Materials of construction	Stainless steel as per AISI 316L
Body, Bonnet	SS316L with NACE compliance (MR 0175)
Internal parts	SS316
External parts	SS316L with NACE compliance (MR 0175)
Diaphragm assembly	Synthetic rubber with PTFE protection - Standard Viton (FKM) - Optional
Elastomers	Nitrile: -60°C to +80°C (-76°F to +176°F) - Standard Fluorocarbon (Viton-FKM): -20°C to +180°C (+4°F to +356°F)
Standard Nominal Flow Rate at 150 psi (10 bar) inlet pressure, a set pressure of 87 psi (6 bar) and flow open until output drops 14.5 psi (1 bar) from set point.	1/8" - 17 scfm / 481.4 lpm 1/4" - 20 scfm / 566.3 lpm
CV value	1/8" - (0.32) 1/4" - (0.38)
Type	Relieving - Standard Non-relieving - Optional
Pressure adjustment	Hex headed adjusting screw
Regulated sec. pressure ranges	3.0 - 30 psi (0.21 - 2.10 bar) 5.0 - 50 psi (0.34 - 3.45 bar) 10.0 - 100 psi (0.69 - 6.89 bar) 15.0 - 150 psi (1.0 - 10.0 bar)
Gauge port (2 nos.)	1/4" NPT
Mounting	Panel mount nut - Standard
Weight	.66 lbs (0.3 Kgs.)

Visit our website to discover other solutions from Marsh Medical! Need further assistance? Contact your regional salesperson.

[marsh-medical.com](http://marsh-medical.com)

Marsh Medical, a division of the Marsh Bellofram Group of Companies

8019 Ohio River Blvd. Newell, WV 26050 USA  
304-387-1200 | [customerRFQ@marshbellofram.com](mailto:customerRFQ@marshbellofram.com)

REV 09.12.24