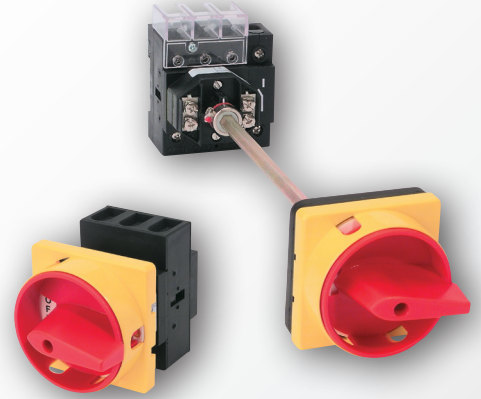


# NON- FUSED DISCONNECT SWITCHES

## PRODUCT PROFILE

ATC Diversified's Non-Fused Disconnect Switches deliver superior performance in the most rugged applications and are certified as Manual Motor Controllers Suitable as Motor Disconnects for motors up to 40HP at 480V (55kW at 400V). Panel/Base and door mounting options allow switches to be installed in virtually any enclosure.



### FEATURES AND BENEFITS

- Complete assembled switches with operating handles for JIT manufacturing and reduced inventory.
- Installations available for both door mount and panel/base mount.
- 10kA short circuit rating at 600V AC with Class J fuses.
- Positive drive to open double break contacts to ensure circuit isolation.
- Compact, space saving design for reduced size control panels.
- Variety of operating handle styles and colors with Type 1, 2, 3, 3R, 4/4X, 12 and 13, IP55, and IP65 ingress protection ratings for the most demanding industrial environments.
- Glass filled polyamide thermoplastic housings are ARC track resistant and provide insulation between poles.
- Line side terminal shield (provided as standard) and IP20 terminals guard against accidental contact with live parts.
- Integral captive terminal clamps are shipped in the backed-out position for easy wiring and are plated for corrosion resistance.
- Operating handles with ON/OFF and international I/O symbols, can be padlocked OFF with up to three padlocks to meet U.S. and global installation codes and standards requirements.
- Door interlock, can only be opened in the OFF position.
- Positive, reliable actuation of the switch is ensured through the rigid operating shaft that can be cut to length to fit your enclosure depths.

| DCS   |    | 1 | 3 |  |    |    |
|---|----|---|---|--|----|----|
| <b>Current Rating</b>                                 |    |   |   |  |    |    |
| 25 Amp  | 25 |   |   |  |    |    |
| 32 Amp  | 32 |   |   |  |    |    |
| 40 Amp  | 40 |   |   |  |    |    |
| 63 Amp  | 63 |   |   |  |    |    |
| <b>Installation</b>                                   |    |   |   |  |    |    |
| Door Mount *  | D  |   |   |  |    |    |
| Panel/Base Mount                                      | P  |   |   |  |    |    |
| <b>Operator Type</b>                                  |    |   |   |  |    |    |
| Non-Fused (open)                                      |    | 1 |   |  |    |    |
| <b>Number of Power Poles</b>                          |    |   |   |  |    |    |
| 3 Poles   |    |   | 3 |  |    |    |
| <b>Operating Handle Type</b>                          |    |   |   |  |    |    |
| Round DHG (Type 1, 2, 3, 3R, 4/4X, 12, 13 & IP65) **  |    |   |   |  | DG |    |
| Round PHG (Type 1, 2, 3, 3R, 4/4X, 12, 13 & IP65) *** |    |   |   |  | PG |    |
| <b>Operating Handle Color</b>                         |    |   |   |  |    |    |
| Red Operator / Yellow Bezel                           |    |   |   |  |    | RY |
| Black Operator / Grey Bezel                           |    |   |   |  |    | BG |
| <b>Operating Shaft Length</b>                         |    |   |   |  |    |    |
| 283mm (11") *****                                     |    |   |   |  |    | 1  |
| N/A *****   |    |   |   |  |    | X  |

\* 25 Amp [25], 32 Amp [32], and 40 Amp [4] only

\*\* Door Mount [D] only

\*\*\* Panel/Base Mount [P] only

\*\*\*\* Round PHG (Type 1, 2, 3, 3R, 4/4X, 12, 13 & IP65) [PG] only

\*\*\*\*\* Round DHG (Type 1, 2, 3, 3R, 4/4X, 12, 13 & IP65) [DG] only

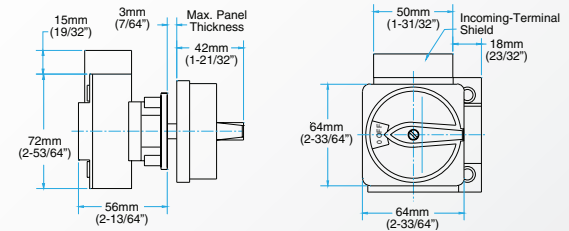
# NON-FUSED DISCONNECT SWITCHES

## SPECIFICATIONS

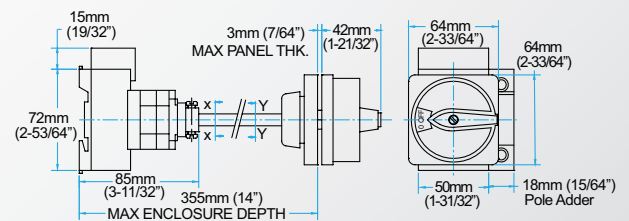
| SWITCH CURRENT RATING CODE             |                 | 25   | 30       | 40       | 63       |
|--|-----------------|--|----------|----------|----------|
|  | UNITS           |  |          |          |          |
| <b>ELECTRICAL UL/CSA APPLICATIONS</b>  |                 |  |          |          |          |
| Rated Operating Voltage, Ue            | VAC             | 600  |          |          |          |
| Rated Operating Current, Ie            | A               | 25   | 32       | 40       | 63       |
| <b>RATED 3-PHASE POWER, Pe</b>         |                 |  |          |          |          |
| @ 240V AC                              | HP              | 7.5  | 7.5      | 10       | 15       |
| @ 480V AC                              | HP              | 15   | 20       | 20       | 25       |
| @ 600V AC                              | HP              | 20   | 25       | 30       | 30       |
| <b>RATED SINGLE PHASE POWER, Pe</b>    |                 |  |          |          |          |
| @ 120V AV                              | HP              | 1.5  | 2        | 3        | 3        |
| @ 240V AC                              | HP              | 2  | 3        | 5        | 7.5      |
| <b>SHORT CIRCUIT RATINGS @ 600V AC</b> |                 |  |          |          |          |
| With Class J Fuses                     | kA              | 10   |          |          |          |
| Maximum Fuse Size                      | A               | 45   | 45       | 70       | 70       |
| <b>ELECTRICAL IEC APPLICATIONS</b>     |                 |  |          |          |          |
| Rated Insulation Voltage, Ui           | VAC             | 750  |          |          |          |
| Rated Impulse Voltage, Uimp            | kV              | 6  |          |          |          |
| Rated Operating Voltage, Ue            | VAC             | 690  |          |          |          |
| <b>RATED OPERATING CURRENT, Ie</b>     |                 |  |          |          |          |
| AC-22A                                 | A               | 25   | 32       | 40       | 63       |
| AC-1                                   | A               | 32   | 40       | 63       | 80       |
| <b>RATED 3-PHASE POWER, AC-23A, Pe</b> |                 |  |          |          |          |
| @ 220 ~ 240V AC                        | kW              | 11   | 15       | 22       | 30       |
| @ 380 ~ 440V AC                        | kW              | 22   | 22       | 45       | 45       |
| @ 500 ~ 690V AC                        | kW              | 22   | 22       | 45       | 45       |
| <b>RATED 3-PHASE POWER, AC-3, PE</b>   |                 |  |          |          |          |
| @ 220 ~ 240V AC                        | kW              | 8  | 11       | 15       | 22       |
| @ 380 ~ 440V AC                        | kW              | 15   | 15       | 30       | 30       |
| @ 500 ~ 690V AC                        | kW              | 15   | 15       | 30       | 30       |
| <b>SHORT CIRCUIT RATINGS</b>           |                 |  |          |          |          |
| With Type gG Fuses                     | kA              | 30   |          |          |          |
| Maximum Fuse Size                      | A               | 32   | 32       | 63       | 63       |
| <b>MECHANICAL</b>                      |                 |  |          |          |          |
| Operating Torque (Door Mount)          | Nm              | 0.8  |          |          |          |
|  | Lb-in.          | 7  |          |          |          |
| Operating Torque (Panel Mount)         | Nm              | 1.0  |          |          |          |
|  | Lb-in.          | 9  |          |          |          |
| <b>ENVIRONMENTAL</b>                   |                 |  |          |          |          |
| Ambient Operating Temperature          | °C/°F           | -25 to 55° C (-13 to 131° F)                       |          |          |          |
| Altitude                               | m/ft.           | 2,000/6,528  |          |          |          |
| <b>Ingress Protection</b>              |                 |  |          |          |          |
| Switch Body                            | IP              | 20   |          |          |          |
| Operating Handles                      | —               | Type 1, 2, 3, 3R, 4/4X, 12 and 13<br>IP65 and IP30 |          |          |          |
| <b>CONSTRUCTION</b>                    |                 |  |          |          |          |
| <b>CONDUCTOR SIZE</b>                  |                 |  |          |          |          |
| UL/CSA                                 | AWG             | 18 ~ 10  | 18 ~ 10  | 12 ~ 6   | 12 ~ 6   |
| Solid/Multi-Strand                     | mm <sup>2</sup> | 2.5 ~ 10   | 2.5 ~ 10 | 6 ~ 25   | 6 ~ 25   |
| Fine Strand with Sleeve                | mm <sup>2</sup> | 0.75 ~ 6   | 0.75 ~ 6 | 2.5 ~ 10 | 2.5 ~ 10 |
| Terminal Torque                        | Nm              | 1.7  | 1.7      | 2        | 2        |
|  | Lb-in.          | 15   | 15       | 17.7     | 17.7     |
| <b>ROHS COMPLIANCE</b>                 |                 |  |          |          |          |

## DIMENSIONS

Door Mount Switch with Round Handle (25A - 63A)



Panel Mount Switch with Round Handle (25A - 63A)



## CERTIFICATIONS

**Conformity to Standards:**

UL 508  
CSA C22.2 No. 14  
IEC 60947-1, 60947-3

**Certifications:**

UL File #: E187641 (Guide NLRV2, NLRV7, NLRV8, NLRV)  
CE Marked (per EU Low Voltage Directive 2006/95/EC and RoHS Directive 2011/65/EU)

