

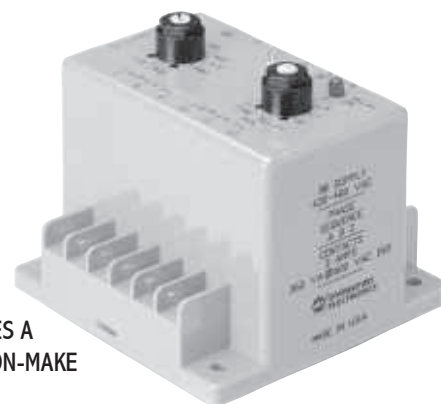
The **SLJ Series** has a built-in Delay-on-Make Time Delay. The SLJ continuously monitors the three phase lines for adverse conditions such as **PHASE LOSS** (single phasing), **UNDER VOLTAGE** (brown outs), and **PHASE REVERSAL** (improper sequence). When any of these conditions occur, the internal relay will de-energize (DROP-OUT). When the fault is corrected, the field adjustable Delay-on Make delay begins. Upon completion of the time delay, the internal relay will energize (PICK-UP). Any subsequent interruptions will reset the delay period.

The SLJ's phase monitor operates the same as the SLA Series. It will drop-out for a phase loss if any phase drops below 83% of its nominal setting and it will also drop-out for under voltage if all three phases drop below 90% of its nominal setting. It is phase sequence sensitive and will not allow start-up if the three phases are reversed.

The SLJ is available in the same standard operating voltage ranges as our other Phase Monitors (see table below). The Delay-on-Make Timer is field adjustable from 0.2 to 8.0 minutes.

There are two LED indicators. The green indicator glows when all conditions are normal, and the red indicator glows when the internal relay is energized.

The SLJ is ideally suited for multiple equipment installations to stagger start equipment after a fault condition.



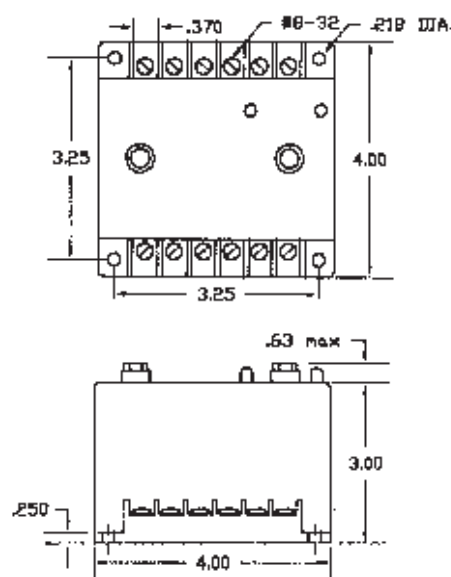
INCLUDES A DELAY-ON-MAKE TIMER

Phase & Under Voltage Monitor

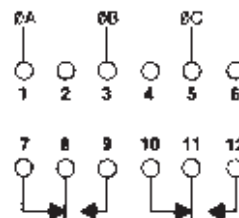
SPECIFICATIONS

OPERATING VOLTAGE	See Table Below	
OUTPUT RATING	See Table Below	
INDICATORS LED	Green LED	Glow When All Conditions Are Normal
	Red LED	Glow When Relay is Energized
RESPONSE TIMES	Operate	0.2 to 8.0 Minutes, Adjustable
	Release	See Table Below
TEMPERATURE RATING	Operate	32° to +131°F (0° to +55°C)
	Storage	-49° to 185°F (-45° to +85°C)
ENCLOSURE	Style "E" Lexan, Surface Mounted	
TERMINATIONS	(12) #8-32 Screw Terminals	
WEIGHT	14 oz.	

DIMENSIONS (INCHES)



WIRING



MODEL NUMBER	OPERATING VOLTAGE	DROP-OUT		PICK-UP	DELAY-ON RELEASE	OUTPUT RATING
		1 Ø LOW	3 Ø LOW			
SLJ-120-ALE	95-130 V. Adj.	79-108 V	85-117 V	1 Volt Above Drop-out	0.5 Sec	DPDT, 345 VA Inductive; 10 Amps Resistive @ 240 VAC
SLJ-230-ALE	190-270 V. Adj.	158-224 V	171-243 V		2.0 Sec	
SLJ-380-ALE	350-440 V. Adj.	290-365 V	315-396 V			DPDT, 360 VA Inductive; 3 Amps Resistive @ 600 VAC
SLJ-440-ALE	430-480 V. Adj.	357-398 V	387-432 V			

All voltage referenced are phase-to-phase.