

1/4 HP True Power Band Monitor

OVERVIEW

True power monitors detect motor load more accurately than current monitors. The current, as measured by a current monitor or ammeter, may only vary slightly between the motor's no load and full load conditions. A true power monitor has better accuracy and resolution because it calculates power consumption from the line voltage, motor current, and power factor.

OPERATION

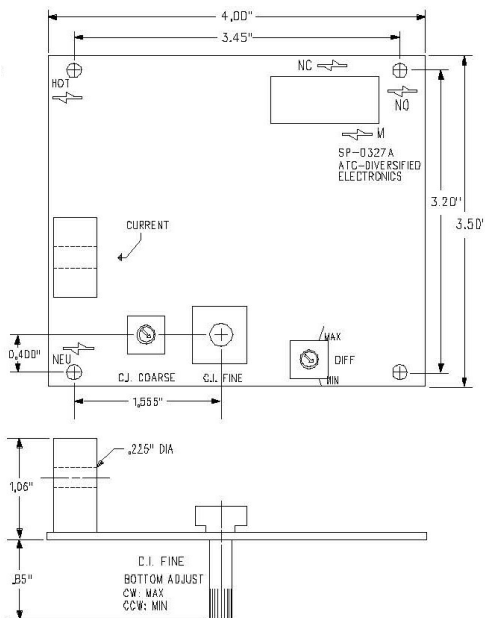
When control voltage is applied, the output relay is de-energized. If the monitored power remains below the preset "C.I." point for longer than the 15 s pick-up delay, the output energizes. When the monitored power increases above the preset "DIFF" point, the SP0327A automatically resets and the output relay de-energizes.

*NOTE: Exceeding the maximum input ratings may damage the device.

ORDERING INFORMATION

Part Number: SP0327A

DIMENSIONS



FEATURES

- Accurate motor load detection
- Superior accuracy compared to current monitors
- Comprehensive power compensation

SPECIFICATIONS

VOLTAGE

CONTROL VOLTAGE 120VAC, 60Hz, 2.5VA Max

INPUT RATINGS

VOLTAGE (NOMINAL) 120V, 1Ø, 60Hz

VOLTAGE (MAXIMUM) 132V

CURRENT (NOMINAL) 0-5A, 1 pass thru C.T.

CURRENT (MAXIMUM) 10A

CUT-IN ADJUSTMENT

RANGE 29-33%

CUT-IN POWER 130-300W @ 115VAC
(Coarse + Fine Adjust)

CUT-OUT ADJUSTMENT 0-40W above Cut-in
(Differential Adjust)

POWER COMPENSATION

105VAC -24W

115VAC ±0W (@ 194W)

125VAC +38W

RELAY OUTPUT

TYPE SPDT

RATING 10A Resistive @ 240VAC,
1/4hp @ 120VAC

RESPONSE TIMES

DROP-OUT 400ms Max

PICK-UP 15s ± 3s Fixed

TEMPERATURE

OPERATING 0°C to +55°C

STORAGE -45°C to +85°C

MOUNTING STYLE

Open board, snap-in standoffs included for 3/16" mounting holes

DIMENSIONS

3.5" x 4"

TERMINATIONS

Five 1/4" quick disconnect terminals