



CRL US
E55826

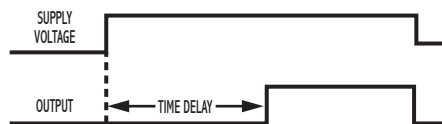
ON-Delay Solid State Output

SPECIFICATIONS

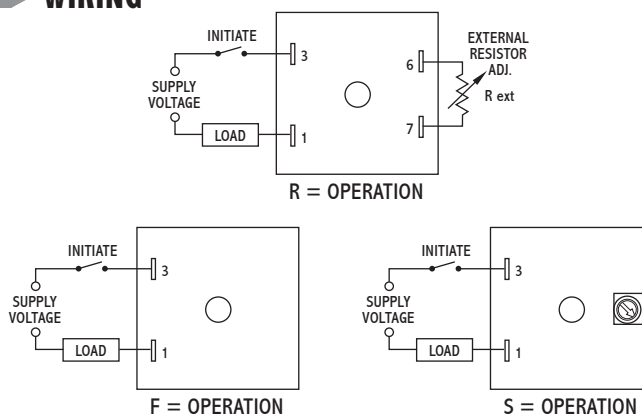
TIMING RANGES	Virtually unlimited. See page 77 for standard ranges available.
OUTPUT RATING	Solid-state, SPST-N.O. 1 amp resistive; 1 amp 25VA @ 24VAC 1 amp 125VA @ 120VAC .5 amp 125VA @ 240 VAC
TIMING TOLERANCES	Minimum Setting +0 – 20% Maximum Setting ±10%
REPEATABILITY	1% maximum; no first cycle effect
RESET TIMES	Before Time Out 100 mSEC After Time Out 50 mSEC
RECYCLE TIME	40 mSEC
SUPPLY VOLTAGE	12 to 240 VDC, 24 to 240 VAC ±10%, 50/60 Hz
FALSE TRANSFER	No
ENCLOSURE	Surface mounted; totally encapsulated with a high quality epoxy for environmental protection.
TEMPERATURE RATING	Operate 32° to 131°F (0° to +55°C) Storage -49° to 185°F (-45° to +85°C)
TERMINATIONS	1/4" quick disconnect terminals
WEIGHT	NET: 1.28 oz Shipping: 1.6 oz.

OPERATION

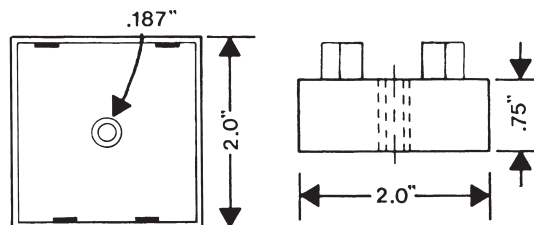
The time delay begins when power is applied to the timer. Upon completion of the delay period, the load energizes. Reset during or after the delay period is accomplished by removal of the input voltage. The TSC will not false transfer if voltage is removed prior to completion of the delay period. A fast recycle time permits accurate, high speed, continuous operation.



WIRING



DIMENSIONS (INCHES)



MODEL NUMBER

MODEL NUMBER	TSC	100	A	C	
TYPE OF OPERATION	Fixed (Factory Preset)		F		
	External Resistor Adjustable; See page 82 for resistor selection.		R		
	Screwdriver Adjustable		S		
DELAY PERIOD	See page 82 for standard ranges available				

Example: TSC-100-ARC-100—Delay on operate, external resistor adjustable from 1 to 100 seconds, UL recognized.