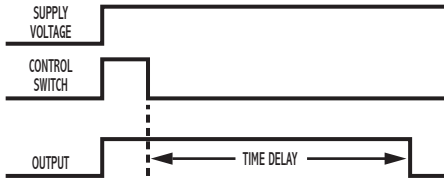
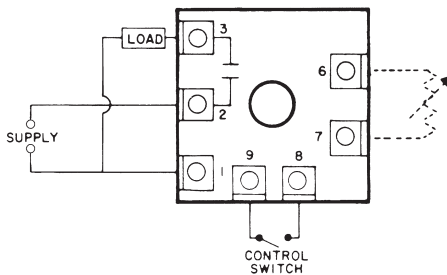


OPERATION

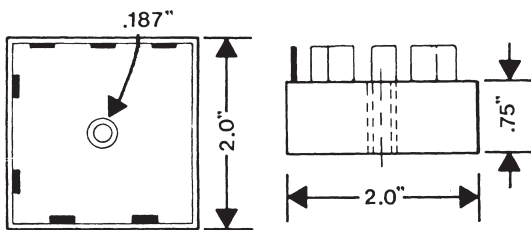
Voltage is continuously applied to the input. An external isolated switch controls the timer. When closed, the load energizes. Opening the switch initiates the delay period. Upon completion of the delay period, the load de-energizes. If the control switch recloses during the delay period, the load remains energized and the timer resets to zero.



WIRING



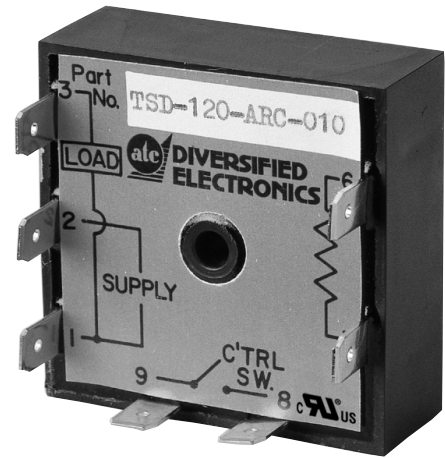
DIMENSIONS (INCHES)



MODEL NUMBER

MODEL NUMBER	TSD		A		C	
SUPPLY VOLTAGE						
120 VAC		120				
240 VAC		240				
TYPE OF OPERATION						
Fixed					F	
External Resistor Adjustable; See page 82 for standard ranges available					R	
DELAY PERIOD						

Example: TSD-120-ARC-200—Delay on Release, 120 VAC, external resistor adjustable from 2 to 200 seconds, UL recognized.



OFF-Delay Solid-State Output

SPECIFICATIONS

TIMING RANGES	Virtually unlimited. See page 77 for standard ranges available.
OUTPUT RATING	Solid-state, SPST-N.O. 1 amp resistive; 1 amp 25VA @ 24VAC 1 amp 125VA @ 120VAC .5 amp 125VA @ 240 VAC
TIMING TOLERANCES	Minimum Setting +0 – 20% Maximum Setting ±10%
REPEATABILITY	1% maximum; no first cycle effect
RESET TIMES	Before Time Out 100 mSEC After Time Out 50 mSEC
RECYCLE TIME	40 mSEC
SUPPLY VOLTAGE	120 or 240 VAC, 50/60 Hz; ±10%
FALSE TRANSFER	No
ENCLOSURE	Surface mounted; totally encapsulated with a high quality epoxy for environmental protection.
TEMPERATURE RATING	Operate 32° to 131°F (0° to +55°C) Storage -49° to 185°F (-45° to +85°C)
TERMINATIONS	1/4" quick disconnect terminals
WEIGHT	NET: 1.28 oz. Shipping: 1.6 oz.