

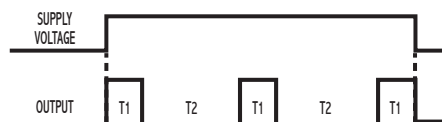
*Repeat Cycle ON-Time
First Solid-State Output*

SPECIFICATIONS

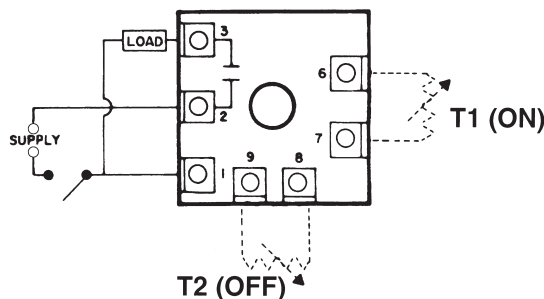
TIMING RANGES	Virtually unlimited. See page 77 for standard ranges available.
OUTPUT RATING	Solid-state, SPST-N.O. 1 amp resistive; 1 amp 25VA @ 24VAC 1 amp 125VA @ 120VAC .5 amp 125VA @ 240 VAC
TIMING TOLERANCES	Minimum Setting +0 – 20% Maximum Setting ±10%
REPEATABILITY	1% maximum; no first cycle effect
RESET TIMES	Before Time Out 100 mSEC After Time Out 50 mSEC
RECYCLE TIME	40 mSEC
SUPPLY VOLTAGE	24, 120, or 240 VAC, 50/60 Hz; ±10%
FALSE TRANSFER	No
DUTY CYCLE	Continuous
ENCLOSURE	Surface mounted; totally encapsulated with a high quality epoxy for environmental protection.
TEMPERATURE RATING	Operate 32° to 131°F (0° to +55°C) Storage -49° to 185°F (-45° to +85°C)
TERMINATIONS	1/4" quick disconnect terminals
WEIGHT	NET: 1.28 oz Shipping: 1.6 oz.

OPERATION

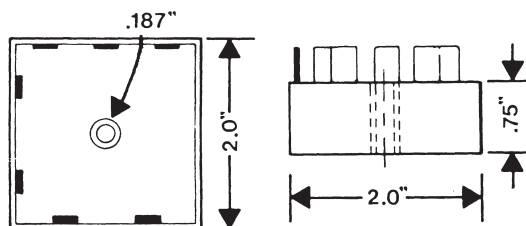
Application of voltage to the input of the timer energizes the load and initiates the ON time. Upon completion of the ON time, the load de-energizes and the OFF time begins. Upon completion of the OFF time, the load energizes and one cycle is completed. This ON/OFF cycling continues until voltage is removed from the input. The ON/OFF time periods are independently adjustable.



WIRING



DIMENSIONS (INCHES)



MODEL NUMBER

MODEL NUMBER	TSG		A		C	
SUPPLY VOLTAGE	24 VAC	24				
	120 VAC	120				
	240 VAC	240				
TYPE OF OPERATION	Fixed			F		
	External Resistor Adjustable; See page 82 for resistor selection.			R		
DELAY PERIOD	See page 82 for standard ranges available					

Example: TSG-24-ARC-300—Repeat cycle, 24 VAC, external resistor adjustable from 3 to 300 seconds, UL recognizable.