

## P119 Control Valve

- Tight Shut-off
- Easy Installation
- NACE Capability
- Low Temperature Version Available
- Gas or Liquid Service
- Inline Maintenance

The P119 Control Valve is versatile and can be used for on/off or throttling service. Springs range from 3-15 psi to 30-60 psi. The valve can be used in corrosive or non-corrosive gases or liquids. Maintenance on the valve can be accomplished without removing the valve body from the line (pressure must be removed and the valve isolated before attempting). A vent is provided in the valve actuator to detect leakage of actuator stem seals. Our combination disc assembly and seat offer positive shutoff at maximum body working pressure. NACE construction materials are standard for the steel body valve only, and comply with the National Association of Corrosion Engineers MR0175.

## Applications

- On-Off or Throttling Control
- Heater Fuel Valve Control
- Gas Distribution

## P119 Part Matrix

[illegible]

## Materials of Construction

Body	Cast Iron, WCB Steel, LCC Steel
Housing	Aluminum
Bonnet	Aluminum
Disk Holder Assembly	Aluminum and Nitrile (standard), Stainless Steel and Nitrile, Stainless Steel and Fluoroelastomer, Aluminum and Fluoroelastomer, or Stainless Steel with Low Temperature Neoprene
Orifice	Aluminum (Standard) or 316 Stainless Steel
Diaphragm	Nitrile, Fluoroelastomer
O-rings	Nitrile, (Standard) or Fluoroelastomer
Stem Wiper	TFE
Adjusting Screw	Steel
Spring	Steel



## Specifications

Body Sizes and End Connection Styles	3/4, 1 or 1-1/4 NPT screwed	
Maximum Inlet Pressure	150 PSIG	10.3 BAR
Maximum Pressure Drop	150 PSIG For all port diameters	10.3 BAR
Maximum Housing Pressure	150 PSIG	10.3 BAR
Spring Ranges	See Table	
Material Temperature Capabilities	With Nitrile Seat / Diaphragm -20 to 170°F   -29 to 77°C	
	With Fluoroelastomer Seat / Diaphragm 40° to 250°F   4.4 to 121°C	
	Low Temperature Version -40° to +170°F   -40° to +77°C	
	Note: Not for use with hot water or ammonia.	
Orifice Size and Flow Coefficients	See Table	
Pressure Setting Adjustment	May be adjusted throughout each spring range by rotating the adjusting screw	
Actuator Pressure Connection	1/4 NPT female	
Spring Case and Bonnet Vents	1/4 NPT female	
Weight	lbs.	kg.
3/4"	4.8	2.2
1"	4.8	2.2
1-1/4"	4.7	2.1

## P119 Flow Coefficients

Orifice Size		3/4 Inch Body	1 Inch Body	1-1/4 Inch Body
Inches	mm	C <sub>v</sub>	C <sub>v</sub>	C <sub>v</sub>
1/8	3.2	0.45	0.45	0.45
3/16	4.8	0.93	0.93	0.93
1/4	6.4	1.6	1.6	1.6
5/16	7.9	2.7	2.7	2.7
3/8	9.5	3.3	3.4	3.6
1/2	12.7	4.6	5.0	5.7
9/16	14.3	5.7	6.0	7.0

## P119 Spring Selection

Spring Range		Spring Part Number	Spring Color Code
PSIG	BAR		
3 - 15	0.2 - 1.0	655-689-000	Red
5 - 20	0.3 - 1.4	655-676-000	Silver
5 - 35	0.3 - 2.4	655-703-000	Blue
30 - 60	2.1 - 4.1	655-690-000	Green

## P119 Gas Sizing Equation

$$C_v = (Q / 963) \sqrt{\frac{(SG)(T)}{(\Delta P)(P_1 + P_2)}}$$

C <sub>v</sub>	Flow Coefficient
Q	Gas Flow Rate, (SCFH)
SG	Specific Gravity
P <sub>1</sub>	Inlet Pressure (PSIA)
P <sub>2</sub>	Outlet Pressure (PSIA)
Δ P	Pressure Drop, (PSI)
T	°Rankin (°F +460)

### Useful Conversions for Gas Flow

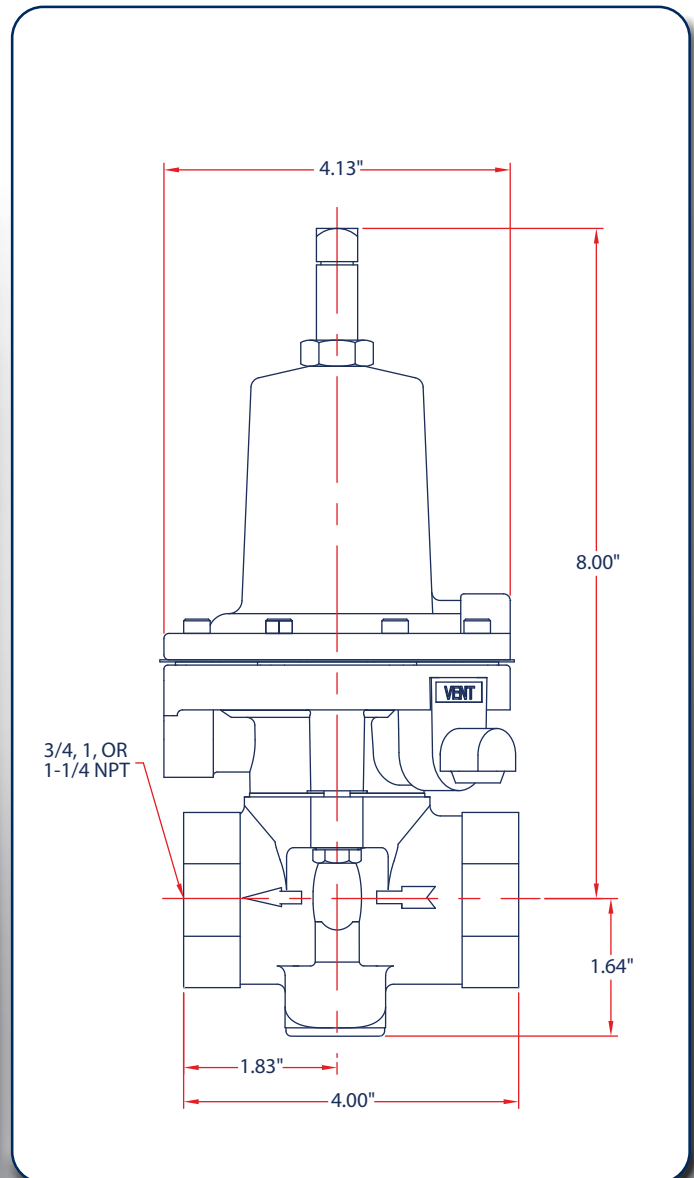
To Convert	Multiply By	To Obtain
SCFD	0.04167	SCFH
SCFS	3600	SCFH
SCFM	60	SCFH
M <sup>3</sup> /Hr.	35.34	SCFH
Lb./Hr.	19.52	SCFH
Kg./Hr.	43.04	SCFH

## P119 Control Valve Rebuild Kits



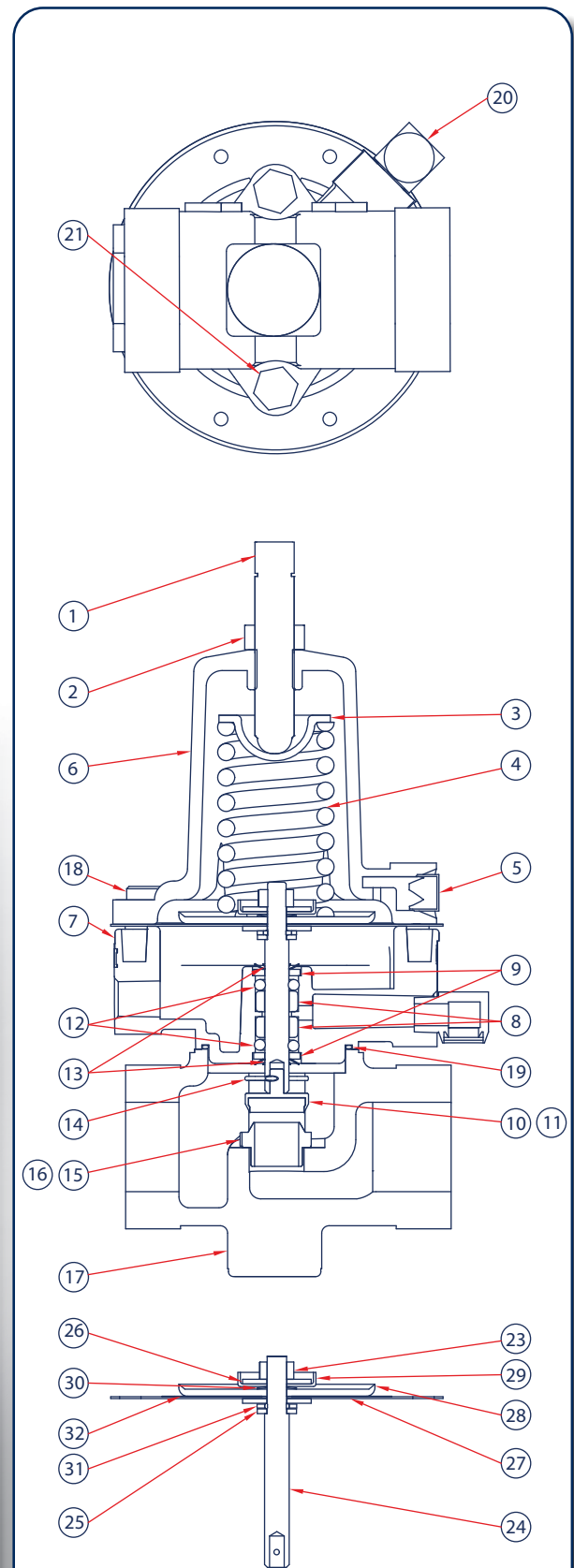
	Part Number	Kit Includes
1/8" - 3/8" Orifice, Nitrile	971-P11-900	Diaphragm assembly, seat assembly, O-rings, hairpin clip, retaining ring and stem seal wiper.
1/2" - 9/16" Orifice, Nitrile	971-P11-901	
1/8" - 3/8" Orifice, Fluorocarbon	971-P11-902	
1/2" - 9/16" Orifice, Fluorocarbon	971-P11-903	
1/8" - 3/8" Orifice, Nitrile/NACE	971-P11-904	
1/2" - 9/16" Orifice, Nitrile/NACE	971-P11-905	
1/8" - 3/8" Orifice, Fluorocarbon/NACE	971-P11-906	
1/2" - 9/16" Orifice, Fluorocarbon/NACE	971-P11-907	
1/8" - 3/8" Orifice, Neoprene LL/NACE	971-P11-908	
1/2" - 9/16" Orifice, Neoprene LL/NACE	971-P11-909	

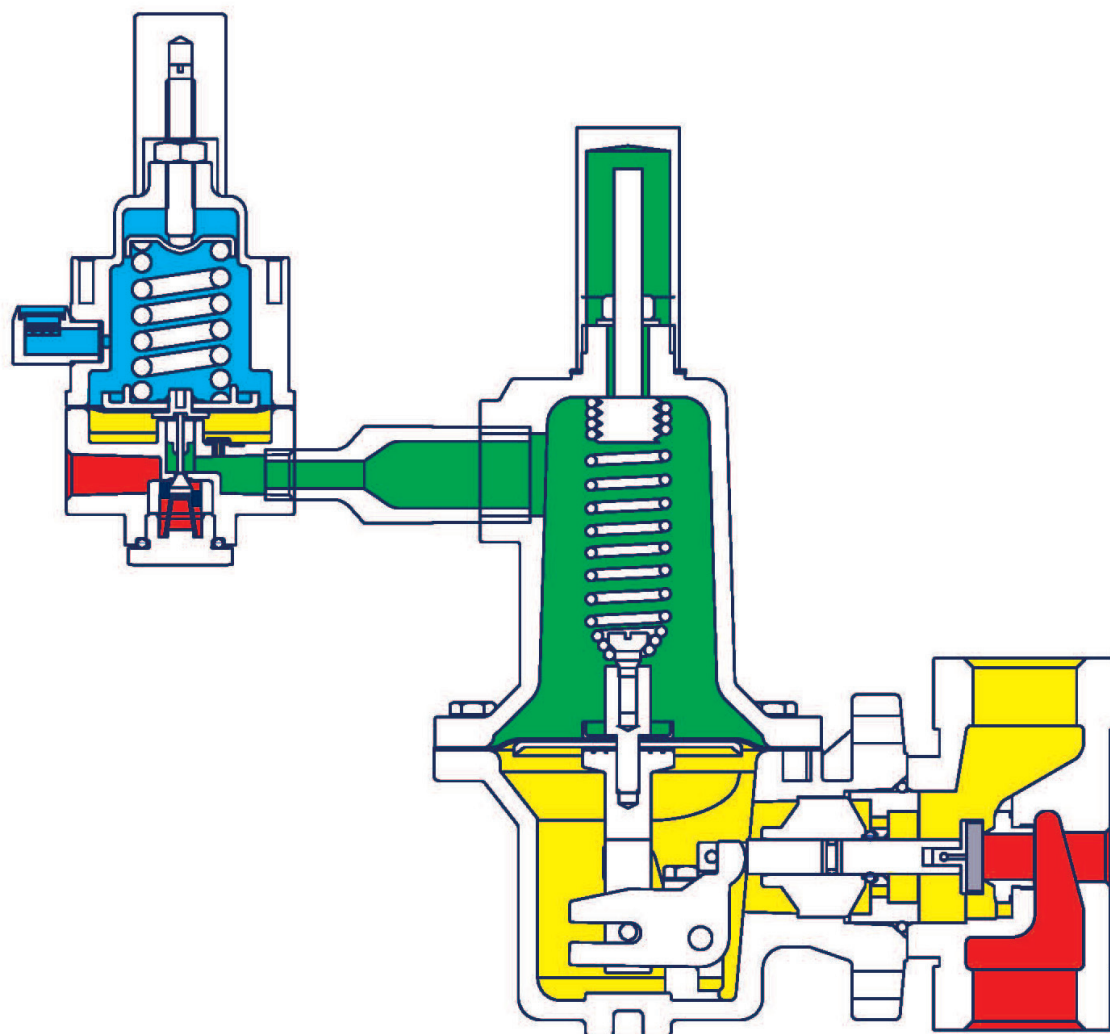
## P119 Dimensions



## P119 Parts

Item	Description	Qty.	Part Number
1	Adjustment Screw	1	648-487-000
2	Lock Nut	1	634-179-000
3	Spring Guide	1	626-079-000
4	Range Spring	1	3-15 PSIG, Red 655-689-000
			5-20 PSIG, Silver 655-676-000
			5-35 PSIG, Blue 655-703-000
			30-60 PSIG, Green 655-690-000
5	Screen	1	647-023-000
6	Machined Bonnet	1	604-237-000
7	Housing	1	629-226-000
8	Bushing	2	608-074-000
9	Stem Wiper	2	649-305-000
10	Seat Assemblies Aluminum	1	Aluminum/Nitrile for 1/8" to 3/8" Orifice 822-023-000
			Aluminum/Fluorocarbon for 1/8" to 3/8" Orifice 822-023-001
			Aluminum/Nitrile for 1/2" & 9/16" Orifice 822-023-002
			Aluminum/Fluorocarbon for 1/2" & 9/16" Orifice 822-023-003
11	Seat Assemblies Stainless	1	316SS/Nitrile for 1/8" to 3/8" Orifice 822-024-000
			316SS/Fluorocarbon for 1/8" to 3/8" Orifice 822-024-001
			316SS/Neoprene (Low Temp) for 1/8" to 3/8" Orifice 822-047-000
			316SS/Nitrile for 1/2" & 9/16" Orifice 822-024-002
			316SS/Fluorocarbon for 1/2" & 9/16" Orifice 822-024-003
			316SS/Neoprene (Low Temp) for 1/2" to 9/16" Orifice 822-047-001
12	O-ring, (Stem)	2	Nitrile 649-303-001
			Fluorocarbon 649-304-001
13	Retaining Ring	2	644-057-000
14	Hair Pin - NACE	1	635-066-000
15	Orifice Aluminum	1	1/8" 688-013-004
			3/16" 688-013-003
			1/4" 688-013-002
			5/16" 688-018-000
			3/8" 688-013-001
			1/2" 688-013-000
			9/16" 688-018-001
16	Orifice 316 Stainless Steel	1	1/8" 688-014-004
			3/16" 688-014-003
			1/4" 688-014-002
			5/16" 688-019-000
			3/8" 688-014-001
			1/2" 688-014-000
			9/16" 688-019-001
17	Body	1	Steel - 3/4 NPT 664-320-000
			Steel - 1 NPT 664-320-001
			Iron - 3/4 NPT 664-318-000
			Iron - 1 NPT 664-318-001
			Iron - 1-1/4 NPT 664-319-000
			LCC - 1 NPT 664-392-001
18	Build Screws	8	648-466-004
19	O-ring, (Housing)	1	Nitrile 649-303-000
			Fluorocarbon 649-304-000
20	Vent Assembly	1	836-004-000
21	Body Bolts	2	Iron Body 648-463-005
			Steel Body 648-463-008
22	NACE Tag (Not Shown)	1	632-503-000
23	Lock Nut	1	634-180-000
24	Stem	1	Aluminum 651-098-000
			Stainless Steel 651-099-000
25	Washer, Flat	1	662-213-001
26	Washer	1	662-213-000
27	Dia-phragms	1	Nitrile 618-074-000
			Fluorocarbon 618-074-001
28	Piston	1	637-306-000
29	Spring Retainer	1	643-191-000
30	Belleville Washer	1	662-212-000
31	Washer, StatOSeal	1	Nitrile 662-214-000
			Fluorocarbon 662-214-001
32	Disk, Teflon Fluorocarbon	1	619-056-000
33	Blank Label, Brady (Not Shown)	1	632-456-000





- Inlet Pressure
- Outlet Pressure
- Atmospheric Pressure
- Loading Pressure

belgas.net



# BelGAS

A Division of the Marsh Bellofram Group of Companies

8019 Ohio River Blvd.  
Newell, WV 26050  
(304) 387-1200 | [www.belgas.net](http://www.belgas.net)



## BelGAS Website

With decades of proven market experience, the BelGAS division of Marsh Bellofram is a global leader in the design and manufacturing of high pressure regulators, low pressure regulators, and other flow control products. Scan the QR or visit our website at <https://bit.ly/BelGAS>



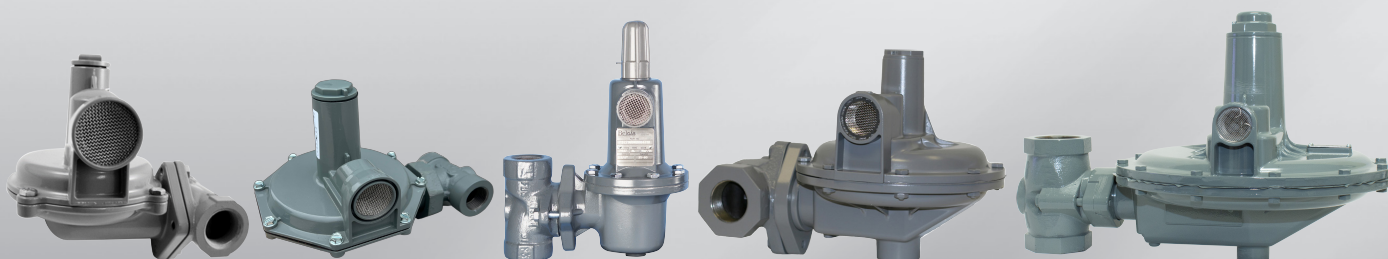
## BelGAS Regulator Sizing Wizard

Need help finding the right regulator for your application? Check out the BelGAS Regulator Sizing Wizard - an interactive online tool that makes it easier than ever to precisely match a regulator with your specifications. Scan the QR code or visit our website at <https://bit.ly/BelGAS-Wizard>



## BelGAS Videos

Interested in learning more about what BelGAS has to offer? Visit our YouTube channel and check out the BelGAS playlist for How-Tos, product overviews, and more! Scan the QR code or watch the videos on our YouTube channel at <https://bit.ly/BelGAS-YouTube-List>



The contents of this publication are presented for informational purposes only. Although we have made reasonable efforts to give information that we believe is up-to-date and accurate, we make no representations or warranties regarding its adequacy, accuracy, completeness, or correctness. We do not warrant or represent that the information is complete in every respect. Our terms and conditions, which are available upon request, govern all sales. We reserve the right to modify or improve the designs and specifications of our products, and the information contained in this document is subject to change without notice.

We reserve the right to modify or improve the designs or specifications of our products and the information contained in this document is subject to change without notice. The user is solely responsible for making the final selection of the product and assuring that all installation, performance, endurance, maintenance, safety, and warning requirements of the product are met. Final product recommendations should be verified by a gas professional.

BelGAS does not assume responsibility for its products' selection, use, or maintenance. Neither BelGAS nor its suppliers shall be liable for any loss or damage to the user or third parties caused by the product, the confidential information of BelGAS, or BelGAS's performance of these terms.