

# P1808 Pilot Operated Relief Valve/ Back Pressure Regulator

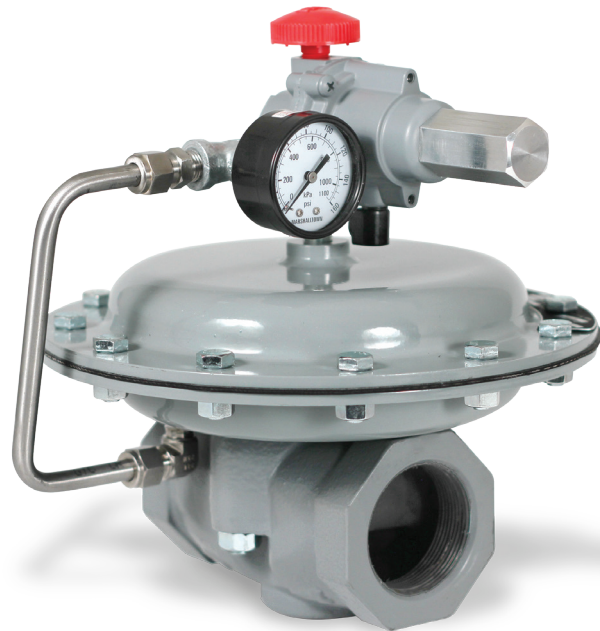
The P1808 pilot-operated relief valve/back pressure regulator is used to maintain pressure on gas separators, and in pressure relief applications in gas distribution systems. The function of the P1808 is controlled by the type of pilot installed on the unit. This allows the unit to achieve wide-open flow more easily. The unit controls pressures from 3 to 125 PSIG (0.21 to 8.6 Bar), and the set pressure can be adjusted for individual requirements by the adjusting screw on the pilot.

## Applications

- Gas Service
- Gas Separators
- Distribution Relief Device

## Features

- Pilot Operated
- High Flow Capacity



## P1808 Part Matrix

<b>P1808</b>	<b>16</b>								
	↑↑	↑↑↑↑	↑	↑	↑	↑	↑		
	<b>16</b>								2" NPT Standard
									Output Pressure Ranges
									PSIG                  BAR
	<b>018</b>								3 - 18                  0.206 - 1.240
	<b>040</b>								15 - 40                1.034 - 2.757
	<b>125</b>								35 - 125              2.413 - 8.618
									Regulator Setup
		<b>B</b>							Back Pressure Regulator
		<b>R</b>							Relief Valve
									Accessories
			<b>0</b>						None
			<b>1</b>						Gauge
			<b>2</b>						Filter
			<b>3</b>						Filter and Gauge
									Pilot Trim
			<b>0</b>						Nitrile
			<b>2</b>						Fluorocarbon
									Upstream Control
			<b>0</b>						No
			<b>1</b>						Yes
									Body Material
			<b>0</b>						Cast Iron
			<b>2</b>						WCB Steel
			<b>3</b>						Cast Iron 90° Angle

## Materials of Construction

Body, Bonnet, Diaphragm Case	
P1808 Body	Ductile Iron or WCB Steel
Diaphragm Plates and Diaphragm Casings	Zinc-plated steel
Diaphragm	Nitrile (NBR)
O-Rings	Nitrile (NBR)
Gaskets	Nylon
Backup Rings	Polytetrafluoroethylene (PTFE)
Spring	Zinc-plated Steel (Standard)
Valve Plug Guide	Stainless Steel
PL82 Series Pilot	
Body	Aluminum
Spring Case	Aluminum
Body Plug	Aluminum
Valve Plug	Nitrile (NBR)
Spring	Zinc-plated Steel
Diaphragm	Nitrile (NBR) or Fluorocarbon (FKM)
Spring Seat	Zinc-plated Steel
Stem Guide	Stainless Steel
Adjusting Screw	Zinc-plated Steel
O-Rings	Nitrile (NBR) or Fluorocarbon (FKM)
Closing Cap	Aluminum
Connector Cap	Stainless Steel
Mounting Parts	
Tubing	Stainless Steel
Fittings	Stainless Steel
Pipe Tees	Stainless Steel
Pipe Nipples	Stainless Steel
Options	
Upstream control line construction	
Pressure gauge (0 to 160 PSIG / 0 to 11.0 BAR / 0 to 1.1 MPa)	
P590 Series Pilot Supply Filter	
Approximate Weights	
Type 1808	22 pounds (10 kg)

## P1808 Flow and Sizing Coefficients

Type	Flow Coefficients (Wide-Open)		C <sub>1</sub>	K <sub>m</sub>	IEC Sizing Coefficients		
	C <sub>g</sub>	C <sub>v</sub>			X <sub>T</sub>	F <sub>L</sub>	F <sub>D</sub>
1808	1410	40.1	35.2	0.79	0.78	0.89	0.50
1808 with Angle Body	1800	51.4	35	0.76	0.78	0.87	0.50

## P1808 Inlet Pressure

Maximum Inlet Pressure	150 PSIG
------------------------	----------

## P1808 Capacities<sup>1</sup> Using Internal Control Line and a Pilot with High-Gain Restriction

Relief Pressure Setting		Capacity in Thousands of SCFH (Nm <sup>3</sup> /h) of 0.6 Specific Gravity Natural Gas						
		Pressure Build-up in PSIG Over Relief Pressure Setting						
PSIG	BAR	2	6	10	15	20	25	30
5	0.34	32	46	50	61	70	80	89
12	0.83	41	55	65	74	84	93	102
20	1.4	56	73	80	89	99	108	117
30	2.1	67	89	99	108	117	127	136
40	2.8	85	105	120	127	136	145	154
50	3.5	94	120	137	145	154	163	172
60	4.1	--	135	152	163	172	181	190
70	4.8	--	150	168	161	190	200	209
80	5.5	--	161	180	200	201	218	227
90	6.2	--	170	192	213	227	236	245
100	6.9	--	183	209	231	245	254	263
110	7.6	--	197	223	246	263	276	281
125	8.6	--	201	241	267	284	298	--

-- Shaded areas indicate capacities with main valve wide-open.  
1. Capacities based on 0 PSIG (0 BAR) outlet pressure. If outlet pressure is not 0 PSIG (0 BAR), shaded capacities may be recalculated using the wide-open C<sub>g</sub> and the desired pressure drop.

## P1808 Capacities Using Optional External Control Line and a Pilot with High-Gain Restriction

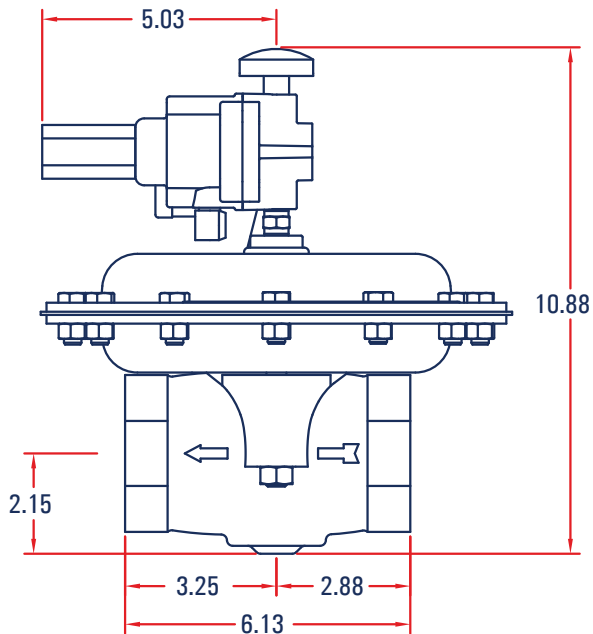
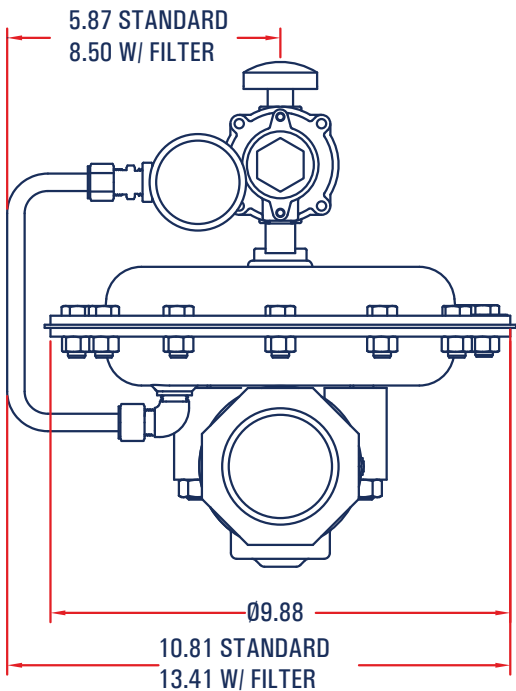
Set Pressure Range, PSIG (BAR)	Set Pressure <sup>1</sup>		Buildup Over Set Pressure to Begin Opening Main Valve <sup>2</sup>		Buildup Over Set Pressure to Fully Open Main Valve <sup>3</sup>		Pressure Drop Below Set Pressure to Reseat Pilot		Capacities of 0.6 Specific Gravity Natural Gas <sup>4</sup>	
	PSIG	BAR	PSIG	BAR	PSIG	BAR	PSIG	BAR	SCFH	Nm <sup>3</sup> /h
3 to 18 (0.21 to 1.2)	3	0.21	0.9	0.06	6.0	0.41	1.0	0.07	37,000	992
	5	0.35	0.7	0.05	4.0	0.28			37,000	992
	10	0.69	0.7	0.05	1.2	0.08			42,000	1126
	15	1.0	0.7	0.05	1.0	0.07			52,000	1394
15 to 40 (1.0 to 2.8)	15	1.0	0.8	0.05	1.1	0.07	1.0	0.07	53,000	1420
	20	1.4							63,000	1688
	30	2.1							82,000	2198
	40	2.8							101,000	2707
35 to 125 (2.4 to 8.6)	40	2.8	1.4	0.09	1.9	0.13	1.0	0.07	102,000	2734
	50	3.5							121,000	3243
	60	4.1							139,000	3725
	70	4.8							157,000	4208
	80	5.5	1.6	0.11	2.2	0.15	1.0	0.07	176,000	4717
	90	6.2							194,000	5199
	100	6.9							213,000	5708
	110	7.6							231,000	6191
	125	8.6							258,000	6914

- Set pressure is defined as the pressure at which the pilot exhaust starts to bubble (discharge).
- Crack pressure is the inlet pressure at which the main valve starts audible flow.
- Inlet pressure buildup over the set pressure to achieve wide-open capacity.
- Capacities with inlet piping equal to body size and without outlet piping.

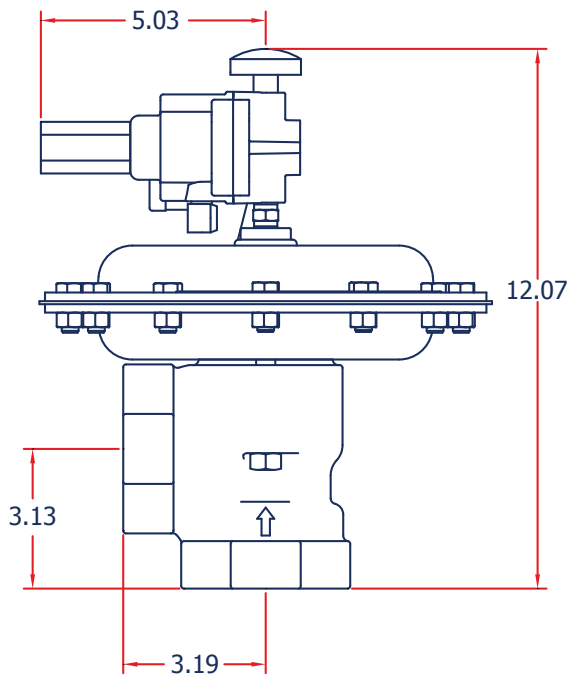
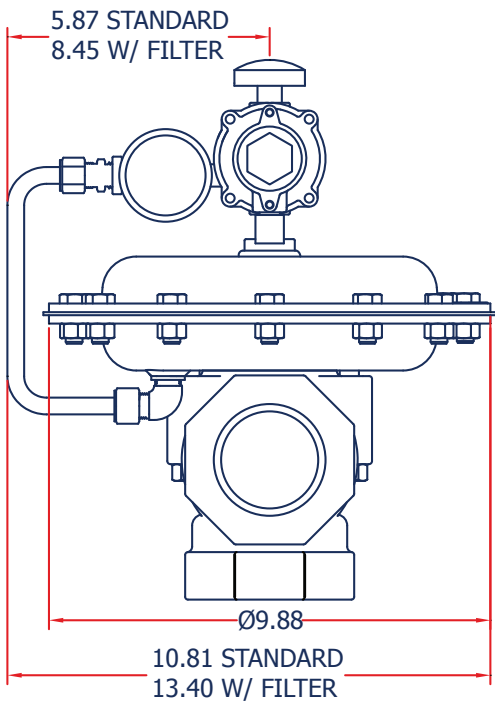
P1808 Regulator Rebuild Kits

	Kit Includes	Part Number
P1808	Nitrile Diaphragm Assembly, Valve plug O-rings & backup O-rings, Casing/ body gasket	971-180-800

P1808 Dimensions



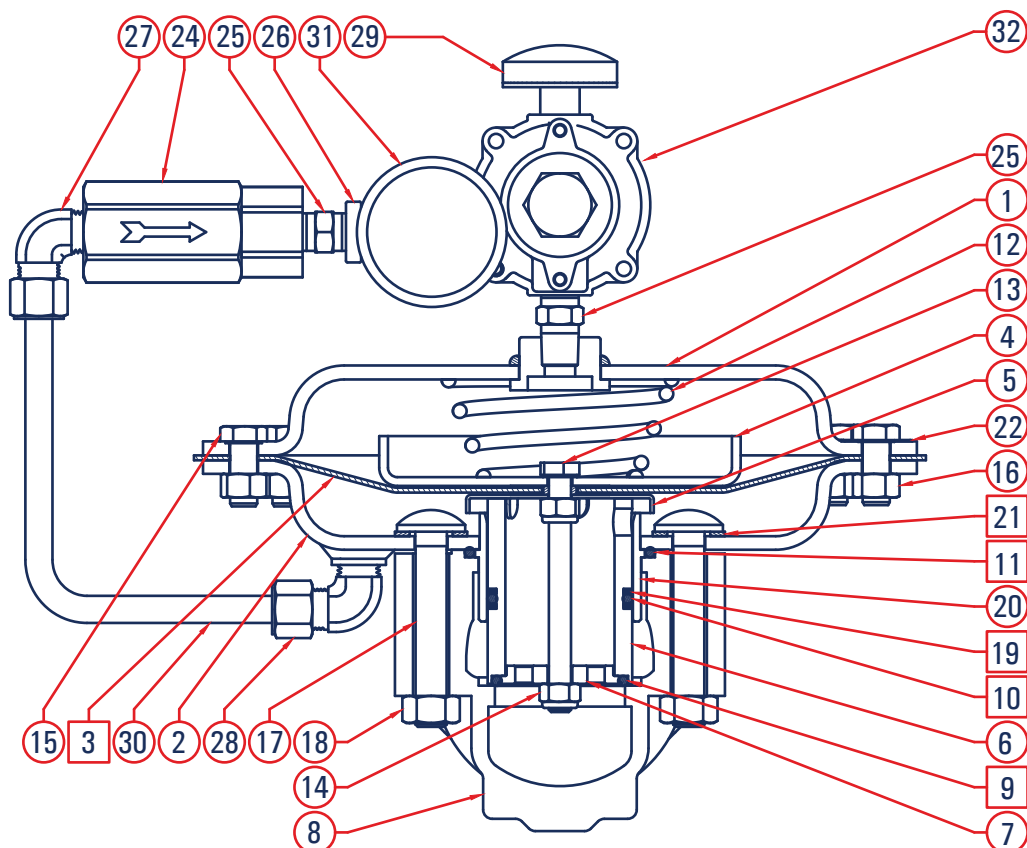
Angle Body



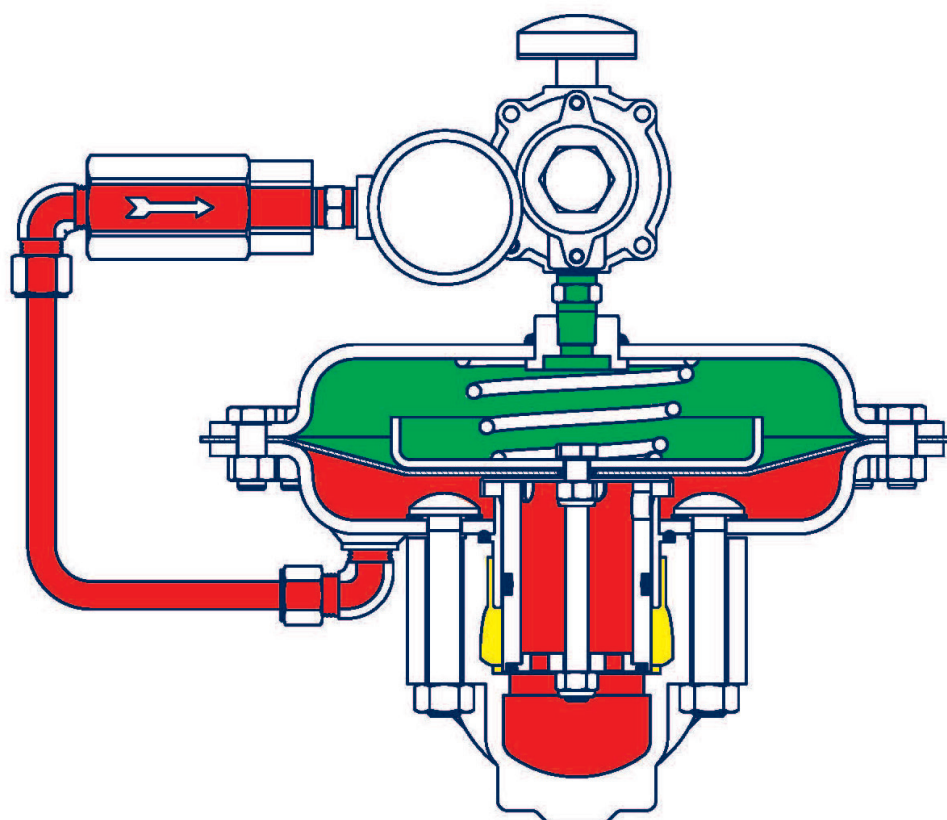
## P1808 Parts

Item	Description	Qty.	Part Number
1	Upper Casing, Steel	1	802-121-000
2	Lower Casing, Steel	1	802-122-000
3	Diaphragm Assembly	1	804-278-000
4	Upper Diaphragm Plate	1	638-080-000
5	Lower Diaphragm Plate	1	638-081-000
6	Valve Plug, Stainless Steel	1	639-121-000
7	O-ring Retainer	1	643-207-000
8	Body	1	2" NPT - Iron, Straight
			664-387-000
			2" NPT - Steel, Straight
			664-387-001
			2" NPT - Iron, Angle
			664-429-000
9	Valve Plug Base O-ring - Nitrile	1	649-309-005
10	Valve Plug O-ring - Nitrile	1	649-309-006
19	Valve Plug Backup Ring	1	649-320-000
11	Upper Valve Plug O-ring - Nitrile	1	649-309-007
12	Spring	1	655-747-000
13	Valve Plug Bolt	1	648-467-006
14	Valve Plug Bolt Nut	2	634-201-000
15	Casing Build Screws	12	648-467-007
16	Casing Build Screws Nuts	12	634-151-000
17	Casing/Body Build Screws	2	603-010-000

Item	Description	Qty.	Part Number
18	Casing/Body Build Screw Nuts	2	634-202-000
20	Valve Plug Guide	1	626-113-000
21	Casing/Body Gasket	2	624-085-000
22	Name Plate	1	632-553-000
24	P590 Filter Assembly - Brass	1	P594
	P590 Filter Assembly - Stainless		P595
25	Hex Nipple - 1/4	1	622-056-000
26	Street T - 1/4 FxM	1	622-064-000
27	Compression Ftg. - 3/8 x 1/4 NPT	1	622-065-000
28	Elbow Compression Ftg. - 3/8 x 1/4 NPT	1	622-066-000
29	Vent	1	836-009-000
30	Pilot Tubing - Standard	1	660-083-000
	Pilot Tubing - With P590 Filter		660-083-001
31	0-160 PSI Gauge	1	GG20160C4
32	Consult PL82 / PL83 Pilot Regulator information data sheet in the BelGAS Product Binder in Tab entitled "Pilot's and Small Regs"	1	



  - PARTS INCLUDED IN REPAIR KITS 971-180-8XX



-  Inlet Pressure
-  Outlet Pressure
-  Loading Pressure

**belgas.net**



# BelGAS

A Division of the Marsh Bellofram Group of Companies

8019 Ohio River Blvd.  
Newell, WV 26050  
(304) 387-1200 | [www.belgas.net](http://www.belgas.net)



## BelGAS Website

With decades of proven market experience, the BelGAS division of Marsh Bellofram is a global leader in the design and manufacturing of high pressure regulators, low pressure regulators, and other flow control products. Scan the QR or visit our website at <https://bit.ly/BelGAS>



## BelGAS Regulator Sizing Wizard

Need help finding the right regulator for your application? Check out the BelGAS Regulator Sizing Wizard - an interactive online tool that makes it easier than ever to precisely match a regulator with your specifications. Scan the QR code or visit our website at <https://bit.ly/BelGAS-Wizard>



## BelGAS Videos

Interested in learning more about what BelGAS has to offer? Visit our YouTube channel and check out the BelGAS playlist for How-Tos, product overviews, and more! Scan the QR code or watch the videos on our YouTube channel at <https://bit.ly/BelGAS-YouTube-List>



The contents of this publication are presented for informational purposes only. Although we have made reasonable efforts to give information that we believe is up-to-date and accurate, we make no representations or warranties regarding its adequacy, accuracy, completeness, or correctness. We do not warrant or represent that the information is complete in every respect. Our terms and conditions, which are available upon request, govern all sales. We reserve the right to modify or improve the designs and specifications of our products, and the information contained in this document is subject to change without notice.

We reserve the right to modify or improve the designs or specifications of our products and the information contained in this document is subject to change without notice. The user is solely responsible for making the final selection of the product and assuring that all installation, performance, endurance, maintenance, safety, and warning requirements of the product are met. Final product recommendations should be verified by a gas professional.

BelGAS does not assume responsibility for its products' selection, use, or maintenance. Neither BelGAS nor its suppliers shall be liable for any loss or damage to the user or third parties caused by the product, the confidential information of BelGAS, or BelGAS's performance of these terms.